



LEBATEX[®]
A STACY GARCIA COMPANY

Upholstery



Table of Contents

If viewing digitally, click any option below to jump to the selected page.

[Indoor Woven Fabrics](#)

[Velvet Fabrics](#)

[Faux Leathers](#)

[Indoor/Outdoor Fabrics](#)

Indoor Wovens

LebaTex provides an extensive line of well-designed, performance indoor upholstery fabrics, including wovens, velvets and faux leathers. All indoor woven upholstery fabrics from LebaTex are designed and manufactured to meet or exceed ACT minimum standards for commercial end use. Every running line upholstery fabric comes standard with a stain resistant technology and backing, including Alta™, Crypton®, or Nanotex®.

BREAKERS

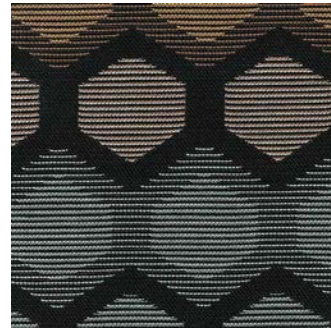
A 3D hexagonal layout adorned with striking shading and precise linework. Inspired by the changing colors of ocean waves, the interplay of shadows within this fabric mirrors the ebb and flow of tides, elevating any project with the organic beauty of nature's rhythmic dance.

Specs:

Content: 78.88% Polyester, 21.12% Seaqual Polyester
Finish: Alta™ DWR PFAS Free Performance Finish and Acrylic Backing
Width: 58" wide
Repeat: 3.625" H x 11.5" V
Abrasion: Wyzenbeek – 63,000 Double Rubs
Flame Resistance: NFPA 260, Cal 117-2013
Country of Origin: USA



Breakers-Driftwood
9731-40-PFAL



Breakers-Obsidian
9731-10-PFAL



Breakers-Sandcastle
9731-50-PFAL



Breakers-Seaglass
9731-30-PFAL



Breakers-Sunset
9731-20-PFAL

COASTLINE

An alternating herringbone pattern with a multicolored weave. Its contrasting hues mimic the interplay between the ocean waves and the coastline, adding dynamic beauty and the essence of nature's meeting point into any space. As shown below, pattern is railroaded.

Specs:

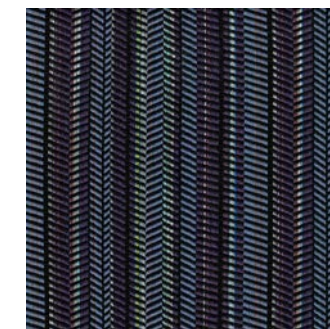
Content: 75.81% Olefin, 23.06% Seaqual Polyester, 1.13% PCR Polyester
Finish: Alta™ DWR PFAS Free Performance Finish and Acrylic Backing
Width: 57" wide
Railroaded: Pattern Shown Railroaded
Repeat: 0.25" H x 5.25" V
Abrasion: Wyzenbeek – 63,000 Double Rubs
Flame Resistance: NFPA 260, Cal 117-2013
Country of Origin: USA



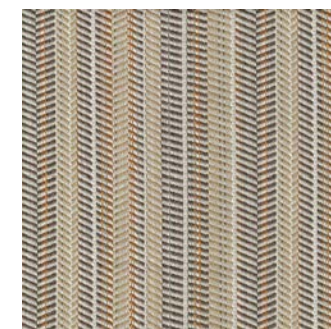
Coastline-Driftwood
9728-10-PFAL



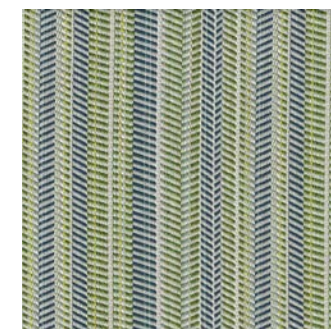
Coastline-Ocean
9728-60-PFAL



Coastline-Orchid
9728-40-PFAL



Coastline-Sandcastle
9729-50-PFAL



Coastline-Seaglass
9728-50-PFAL



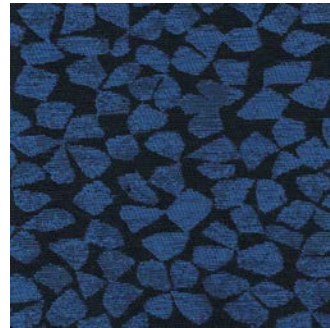
Coastline-Sunset
9728-30-PFAL

MANGROVE

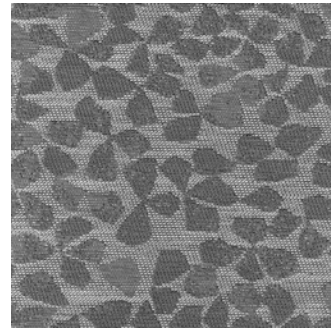
Embrace the natural elegance of dense thickets and flowing waters as Mangrove brings the tranquil beauty of coastal ecosystems into your projects. Inspired by the tangled roots and shapes of mangrove trees, its swirling, organic motif breathes life into the fabric.

Specs:

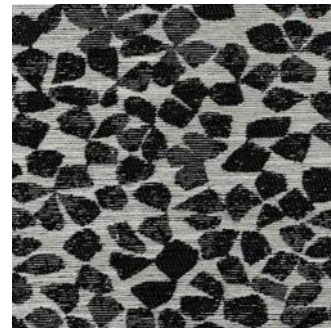
Content: 75.87% Polyester, 24.13% Seaqual Polyester
 Finish: Alta™ DWR PFAS Free Performance Finish and Acrylic Backing
 Width: 56" wide
 Repeat: 28.375" H x 18" V
 Abrasion: Wyzenbeek – 86,000 Double Rubs
 Flame Resistance: NFPA 260, Cal 117-2013
 Country of Origin: USA



Mangrove-Azure
9729-10-PFAL



Mangrove-Fog
9729-60-PFAL



Mangrove-Obsidian
9729-20-PFAL



Mangrove-Salmon
9729-40-PFAL



Mangrove-Sandcastle
9729-50-PFAL



Mangrove-Sunshine
9729-30-PFAL

REEF

A fabric meticulously crafted to capture the intricate textures of the coral reefs. Coral features a textural dotted pattern, bringing timeless elegance and harmony to any space.

Specs:

Content: 71.28% Polyester, 28.72% Seaqual Polyester
 Finish: Alta™ DWR PFAS Free Performance Finish and Acrylic Backing
 Width: 58" wide
 Repeat: No Repeat
 Abrasion: Wyzenbeek – 63,000 Double Rubs
 Flame Resistance: NFPA 260, Cal 117-2013
 Country of Origin: USA



Reef-Amber
9730-60-PFAL



Reef-Azure
9730-50-PFAL



Reef-Driftwood
9730-90-PFAL



Reef-Fog
9730-80-PFAL



Reef-Kelp
9730-100-PFAL



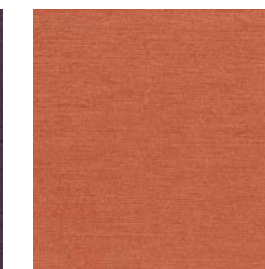
Reef-Lagoon
9730-110-PFAL



Reef-Ocean
9730-40-PFAL



Reef-Orchid
9730-30-PFAL



Reef-Salmon
9730-20-PFAL



Reef-Sandcastle
9730-70-PFAL



Reef-Seaglass
9730-120-PFAL



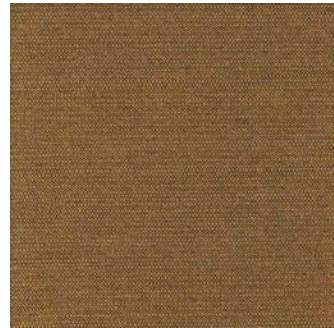
Reef-Sunshine
9730-10-PFAL

SURF STRIPE

A dotted horizontal pattern creates a uniquely subtle striped appearance that mirrors the gentle ebb and flow of low tide ocean waves. Both calming and elegant, Surf Stripe effortlessly brings the soothing essence of the sea into any project.

Specs:

Content: 59.77% Olefin, 34.26% Seaqual Polyester, 5.97% PCR Polyester
Finish: Alta™ DWR PFAS Free Performance Finish and Acrylic Backing
Width: 55" wide
Repeat: 0.125" H x 0.125" V
Abrasion: Wyzenbeek – 51,000 Double Rubs
Flame Resistance: NFPA 260, Cal 117-2013
Country of Origin: USA



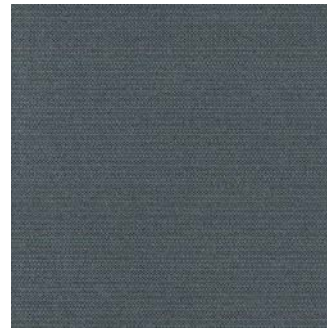
Surf Stripe-Driftwood
9727-30-PFAL



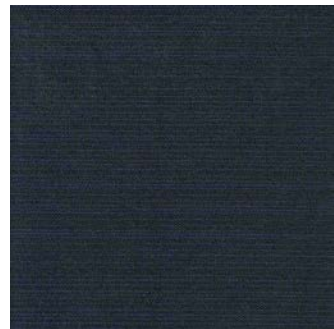
Surf Stripe-Fog
9727-50-PFAL



Surf Stripe-Kelp
9727-20-PFAL



Surf Stripe-Lagoon
9727-70-PFAL



Surf Stripe-Ocean
9727-60-PFAL



Surf Stripe-Sandcastle
9728-20-PFAL



Surf Stripe-Sunset
9728-30-PFAL

TIDEPOOL

Delicately woven over an organic textural base, this unique circular pattern is both enchanting and eye-catching. Bring the ever-changing beauty of our ocean's mood swings and movement indoors with its fluid design.

Specs:

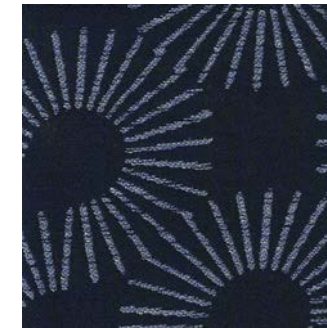
Content: 59.93% PCR Polyester, 21.84% Seaqual Polyester, 17.78% Polyester
Finish: Alta™ DWR PFAS Free Performance Finish and Acrylic Backing
Width: 57" wide
Repeat: 14.313" H x 12.875" V
Abrasion: Wyzenbeek – 63,000 Double Rubs
Flame Resistance: NFPA 260, Cal 117-2013
Country of Origin: USA



Tidepool-Kelp
9726-60-PFAL



Tidepool-Obsidian
9726-40-PFAL



Tidepool-Ocean
9726-30-PFAL



Tidepool-Oyster
9726-20-PFAL



Tidepool-Sandcastle
9726-10-PFAL



Tidepool-Sunset
9726-50-PFAL

ARCADIA

A grid-like weaved pattern that seamlessly combines structure and texture. Its subtle yet captivating twist of color gives dimension and visual appeal. This pattern is available in 9 colorways.

Specs:

Content: 100% Polyester
Finish: Alta™ DWR PFAS Free Performance Finish and Acrylic Backing
Width: 54" wide
Repeat: No Repeat
Abrasion: Wyzenbeek – 120,000 Double Rubs
Flame Resistance: NFPA 260, Cal 117-2013
Country of Origin: China



Arcadia-Bran
9714-70-AAL



Arcadia-Carbon
9714-50-AAL



Arcadia-Chambray
9714-40-AAL



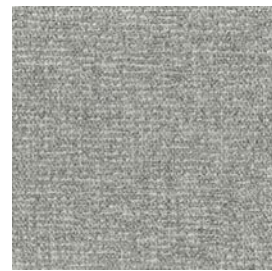
Arcadia-Coffee
9714-60-AAL



Arcadia-Fog
9714-20-AAL



Arcadia-Ink
9714-30-AAL



Arcadia-Nickel
9714-10-AAL



Arcadia-Sandstone
9714-80-AAL



Arcadia-Willow
9714-90-AAL

CONIFER

A midscale chevron pattern overlays vertical hashed lines in this design, conveying a modern retro look with its weave and colors. This pattern is available in 6 colorways.

Specs:

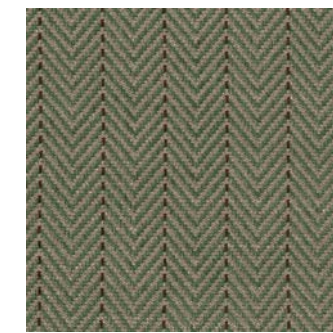
Content: 100% Polyester
Finish: Alta™ DWR PFAS Free Performance Finish and Acrylic Backing
Width: 56" wide
Repeat: 0.38" V x 2" H
Abrasion: Wyzenbeek – 80,000 Double Rubs
Flame Resistance: NFPA 260, Cal 117-2013
Country of Origin: China



Conifer-Amber
9716-50-AAL



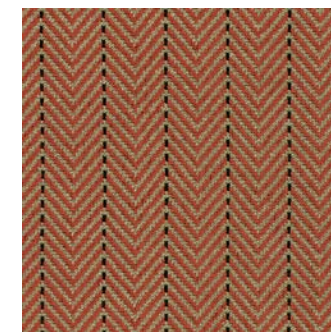
Conifer-Flint
9716-30-AAL



Conifer-Forest
9716-60-AAL



Conifer-Linen
9716-10-AAL



Conifer-Persimmon
9716-40-AAL



Conifer-River
9716-20-AAL

EXPANSE

A plush velvet with a subtle grain and extremely soft hand. Its slight sheen adds a lustrous quality that enhances this fabric. This velvet is an invitation to luxurious comfort and elegance. This pattern is available in 9 colorways.

Specs:

Content: 100% Polyester
Finish: Alta™ DWR PFAS Free Performance Finish and Acrylic Backing
Width: 56" wide
Repeat: No Repeat
Abrasion: Wyzenbeek – 50,000 Double Rubs
Flame Resistance: NFPA 260, Cal 117-2013
Country of Origin: China



Exppanse-Alpine
9712-90-APF



Exppanse-Flax
9712-60-APF



Exppanse-Limestone
9712-10-APF



Exppanse-Mermaid
9712-70-APF



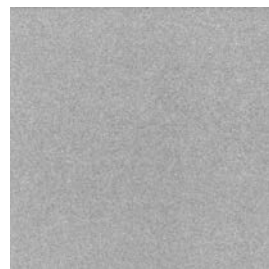
Exppanse-Midnight
9712-80-APF



Exppanse-Nutmeg
9712-30-APF



Exppanse-Oatmeal
9712-20-APF



Exppanse-Seal
9712-50-APF



Exppanse-Truffle
9712-40-APF

TAIGA

This textile marries the timeless elegance of a chevron with a modern and sophisticated stripe. Its use of tonal colors adds a touch of soft luxury and makes for a fabric with timeless style and contemporary sensibility. This pattern is available in 7 colorways.

Specs:

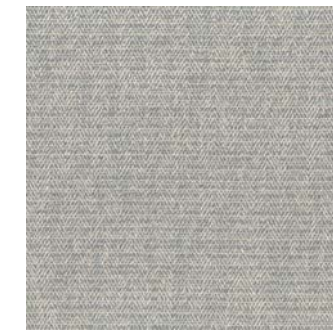
Content: 100% Polyester
Finish: Alta™ DWR PFAS Free Performance Finish and Acrylic Backing
Width: 54" wide
Repeat: No Repeat
Abrasion: Wyzenbeek – 60,000 Double Rubs
Flame Resistance: NFPA 260, Cal 117-2013
Country of Origin: China



Taiga-Charcoal
9715-30-AAL



Taiga-Cocoa
9715-10-AAL



Taiga-Dusk
9715-40-AAL



Taiga-Indigo
9715-50-AAL



Taiga-Juniper
9715-70-AAL



Taiga-Mushroom
9715-20-AAL



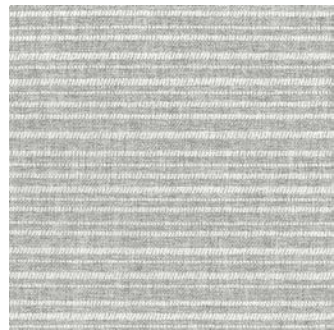
Taiga-Sea
9715-60-AAL

TERRAIN

This simplistic tonal horizontal stripe pattern incorporates subtle visual interest with varying line weights and a weave that gives the hand a high and low texture. A classic pattern that adds sophistication to any space. This pattern is available in 2 colorways.

Specs:

Content: 100% Polyester
Finish: Alta™ DWR PFAS Free Performance Finish and Acrylic Backing
Width: 55" wide
Repeat: 4.25" V x 0" H
Abrasion: Wyzenbeek – 45,000 Double Rubs
Flame Resistance: NFPA 260, Cal 117-2013
Country of Origin: China



Terrain-Fog
9711-20-APF



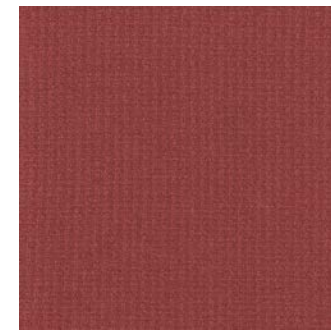
Terrain-Linen
9711-10-APF

TUNDRA

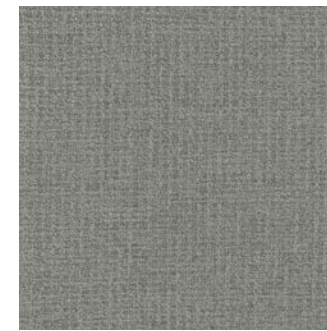
A small-scale basket weave with a luxury look and feel. Its visual richness and strong color palette create an atmosphere of refinement and comfort. This pattern is available in 7 colorways.

Specs:

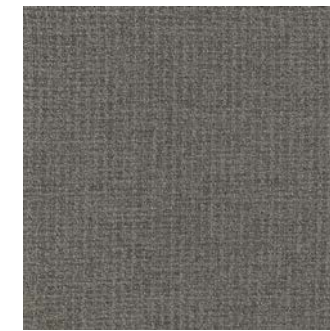
Content: 100% Polyester
Finish: Alta™ DWR PFAS Free Performance Finish and Acrylic Backing
Width: 54" wide
Repeat: No Repeat
Abrasion: Wyzenbeek – 80,000 Double Rubs
Flame Resistance: NFPA 260, Cal 117-2013
Country of Origin: China



Tundra-Brick
9713-70-AAL



Tundra-Fog
9713-40-AAL



Tundra-Graphite
9713-30-AAL



Tundra-Indigo
9713-50-AAL



Tundra-Loden
9713-60-AAL



Tundra-Taupe
9713-20-AAL



Tundra-Toast
9713-10-AAL

PROSE

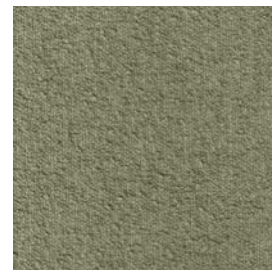
Prose is a versatile yarn dyed textured bouclé. This performance upholstery is not only visually appealing, but also modern and durable.

Specs:

Content: 82% Polyester, 16% Acrylic
Finish: Performance Finish and Acrylic Backing
Width: 55" wide
Abrasion: Wyzenbeek – 195,000 Double Rubs
Flame Resistance: NFPA 260, Cal 117-2013
Country of Origin: China



Prose-Bark
1774-50-ASR



Prose-Basil
1774-100-ASR



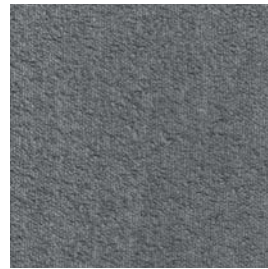
Prose-Carbon
1774-40-ASR



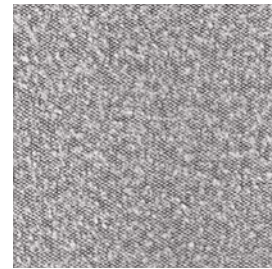
Prose-Chartreuse
1774-90-ASR



Prose-Cream
1774-70-ASR



Prose-Delft
1774-30-ASR



Prose-Domino
1774-20-ASR



Prose-Midnight
1774-80-ASR



Prose-Pine
1774-80-ASR



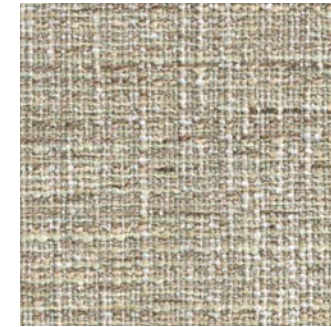
Prose-Putty
1774-60-ASR

CONFETTI

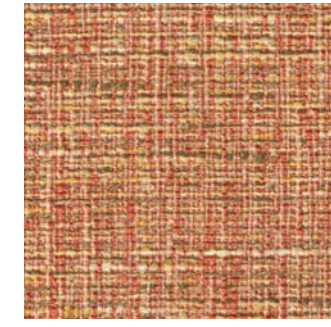
A multi-colored textured upholstery fabric inspired by high fashion with novelty yarns that add an exciting level of dimension.

Specs:

Content: 100% Polyester
Finish: High Performance Stain Repellent and Acrylic Backing
Width: 54" wide
Abrasion: Wyzenbeek – 95,000 Double Rubs
Flame Resistance: NFPA 260, Cal 117-2013
Country of Origin: China



Confetti-Alabaster
1766-10-APF



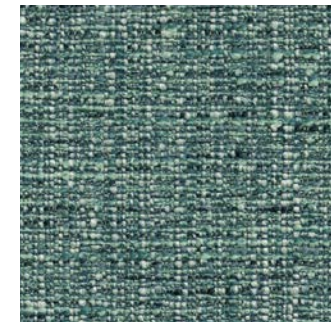
Confetti-Coral
1766-20-APF



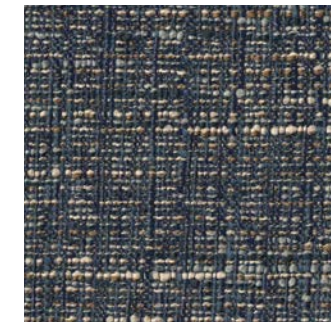
Confetti-Granite
1766-70-APF



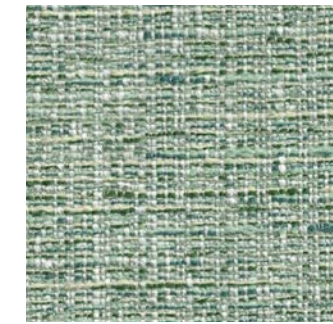
Confetti-Leaf
1766-30-APF



Confetti-Marine
1766-50-APF



Confetti-Midnight
1766-60-APF



Confetti-Seaglass
1766-40-APF

DIVIDE

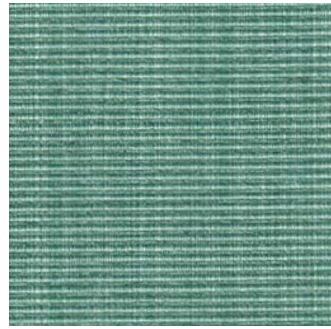
A simple, yet refined horizontally channeled ottoman weave upholstery fabric with an enticing hand.

Specs:

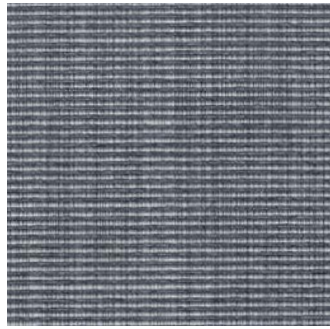
Content: 51% Cotton, 30% Polyester, 19% Rayon
Finish: Alta™ Performance Technology and Acrylic Backing
Width: 59" wide
Abrasion: Wyzenbeek – 60,000 Double Rubs
Flame Resistance: NFPA 260, Cal 117-2013
Country of Origin: China



Divide-Alabaster
1765-10-AAL



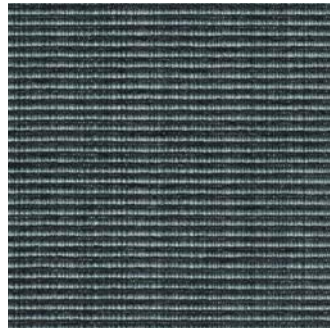
Divide-Aqua
1765-70-AAL



Divide-Denim
1765-50-AAL



Divide-Gold
1765-20-AAL



Divide-Marine
1765-60-AAL



Divide-Mocha
1765-30-AAL



Divide-Stone
1763-40-AAL

INFLECTION

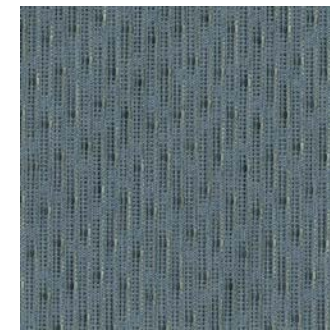
A multi-colored texture upholstery fabric that is contemporary and versatile, Inflection is a performance upholstery fabric that comes standard with Nanotex® and acrylic backing.

Specs:

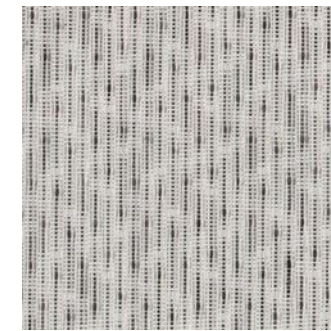
Content: 100% Polyester
Finish: Nanotex® Stain Repellent and Acrylic Backing
Width: 54" wide
Repeat: 3.38" V x 2.13" H
Abrasion: Wyzenbeek – 50,000 Double Rubs
Flame Resistance: NFPA 260, Cal 117-2013
Country of Origin: United States



Inflection-Alabaster
1769-10-ANO



Inflection-Cornflower
1769-20-ANO



Inflection-Onyx
1769-50-ANO



Inflection-Seaglass
1769-40-ANO



[View Divide Online](#)
[Divide Spec Sheet](#)



[View Inflection Online](#)
[Inflection Spec Sheet](#)

OBLIQUE

An interlacing zig zag pattern, Oblique is a performance upholstery fabric that comes standard with Nanotex® and acrylic backing.

Specs:

Content: 100% Polyester
Finish: Nanotex® Stain Repellent and Acrylic Backing
Width: 54" wide
Repeat: 11" H x 14" V
Abrasion: Wyzenbeek – 50,000 Double Rubs
Flame Resistance: NFPA 260, Cal 117-2013
Country of Origin: China



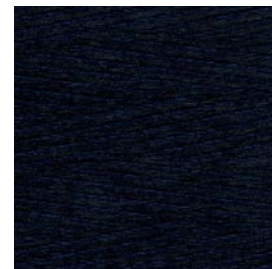
Oblique-Bisque
1768-20-ANO



Oblique-Butterscotch
1768-10-ANO



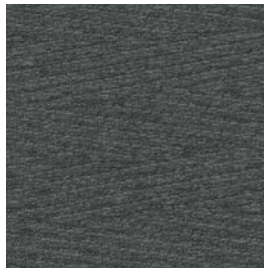
Oblique-Graphite
1768-60-ANO



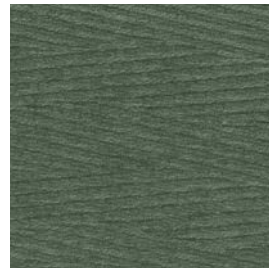
Oblique-Navy
1768-50-ANO



Oblique-Peacock
1768-40-ANO



Oblique-Pewter
1768-90-ANO



Oblique-Sage
1768-70-ANO



Oblique-Sand
1768-80-ANO



Oblique-Seal
1768-30-ANO

PALAZZO

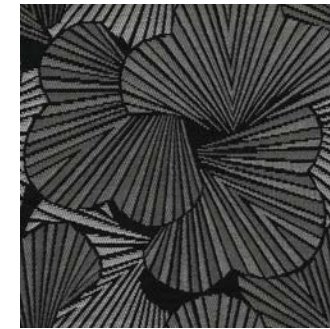
A unique, vibrant upholstery fabric featuring a dynamic Art Deco inspired fan pattern, Palazzo is a performance upholstery fabric that comes standard with Nanotex® and acrylic backing.

Specs:

Content: 100% Polyester
Finish: Nanotex® Stain Repellent and Acrylic Backing
Width: 57" wide
Repeat: 7.5" V x 7.25" H
Abrasion: Wyzenbeek – 50,000 Double Rubs
Flame Resistance: NFPA 260, Cal 117-2013
Country of Origin: United States



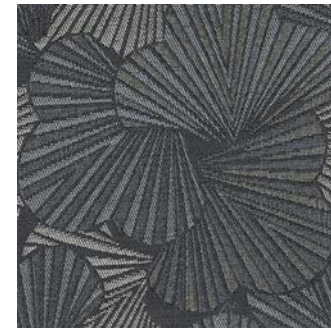
Palazzo-Cobalt
1770-20-ANO



Palazzo-Onyx
1770-60-ANO



Palazzo-Seaglass
1770-40-ANO



Palazzo-Slate
1770-10-ANO



[View Oblique Online](#)
[Oblique Spec Sheet](#)



[View Palazzo Online](#)
[Palazzo Spec Sheet](#)

SEDIMENT

A tweed-like chenille upholstery fabric with an exceptionally soft hand.

Specs:

Content: 82% Polyester, 18% Rayon
 Finish: Alta™ Performance Technology and Acrylic Backing
 Width: 55" wide
 Abrasion: Wyzenbeek – 80,000 Double Rubs
 Flame Resistance: NFPA 260, Cal 117-2013
 Country of Origin: China

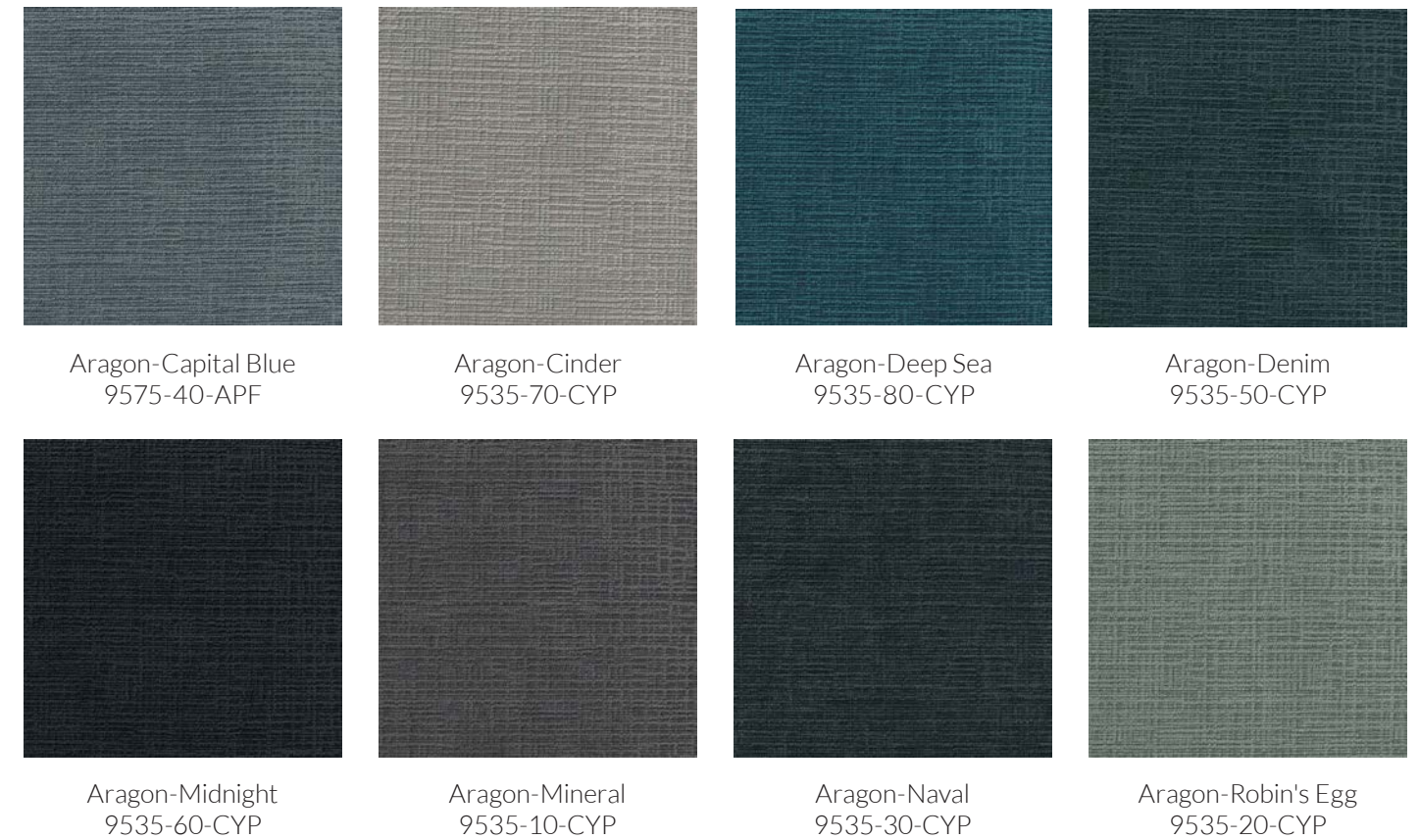


ARAGON

A solid color chenille with a slight cross hatch effect.

Specs:

Content: 100% Polyester
 Finish: Stain Resistant
 Width: 55" wide
 Repeat: No Repeat
 Abrasion: Wyzenbeek – 125,000 Double Rubs
 Flame Resistance: NFPA 260, Cal 117-2013
 Country of Origin: China



[View Sediment Online](#)
[Sediment Spec Sheet](#)



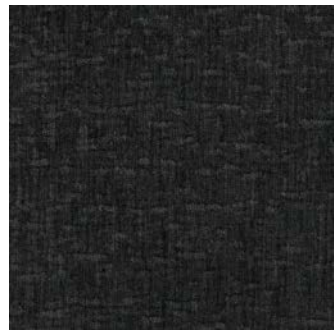
[View Aragon Online](#)
[Aragon Spec Sheet](#)

ATLAS

A plush washed velvet look.

Specs:

Content: 100% Polyester
Finish: Stain Resistant
Width: 54" wide
Repeat: No Repeat
Abrasion: Wyzenbeek – 50,000 Double Rubs
Flame Resistance: NFPA 260, Cal 117-2013
Country of Origin: China



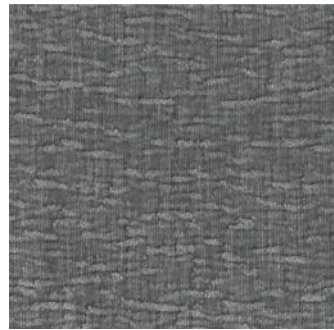
Atlas-Charcoal
9577-30-APF



Atlas-Indigo
9577-40-APF



Atlas-Inlet
9577-50-APF



Atlas-Mercury
9577-20-APF



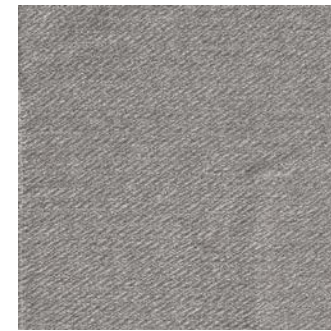
Atlas-Mushroom
9577-10-APF

CROMWELL

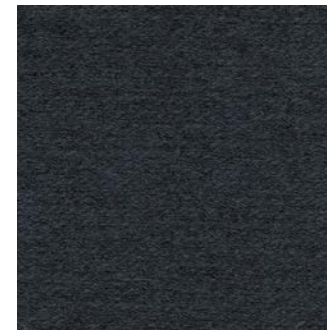
A soft, dry hand with lots of visual texture.

Specs:

Content: 100% Polyester
Finish: Stain Resistant
Width: 56" wide
Repeat: No Repeat
Abrasion: Wyzenbeek – 145,000 Double Rubs
Flame Resistance: NFPA 260, Cal 117-2013
Country of Origin: China



Cromwell-Cinder
9580-20-APF



Cromwell-Indigo
9580-40-APF



Cromwell-Mineral
9580-10-APF



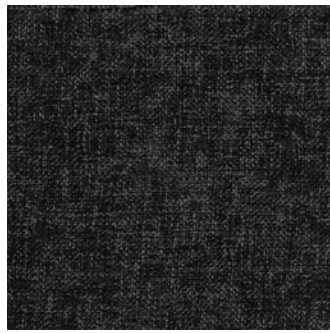
Cromwell-Pewter
9580-30-APF

DEVON

A solid color chenille with a very fine tattersall weave.

Specs:

Content: 82% Polyester, 18% Rayon
Finish: Stain Resistant
Width: 56" wide
Repeat: No Repeat
Abrasion: Wyzenbeek – 60,000 Double Rubs
Flame Resistance: NFPA 260, Cal 117-2013
Country of Origin: China



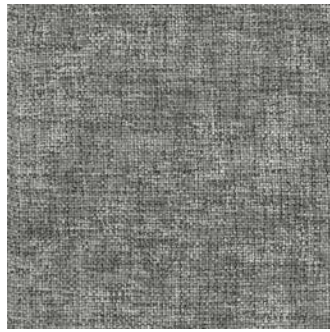
Devon-Coal
9579-20-APF



Devon-Hemp
9579-50-APF



Devon-Midnight
9579-10-APF



Devon-Platinum
9579-40-APF



Devon-Silver
9579-30-APF

MANOR

A lighter, more refined texture.

Specs:

Content: 100% Polyester
Finish: Stain Resistant
Width: 54" wide
Repeat: No Repeat
Abrasion: Wyzenbeek – 350,000 Double Rubs
Flame Resistance: NFPA 260, Cal 117
Country of Origin: China



Manor-Charcoal
9573-20-APF



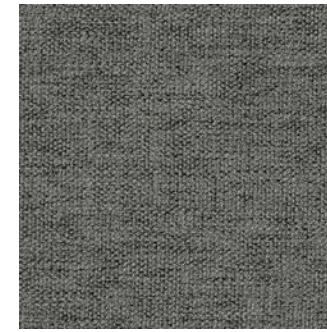
Manor-Denim
9573-10-APF



Manor-Jute
9573-30-APF



Manor-Laguna
9573-60-APF



Manor-Nickel
9573-50-APF



Manor-Pewter
9573-40-APF

SUTTON

A textured chenille with a very subtle stria effect.

Specs:

Content: 100% Polyester
Finish: Stain Resistant
Width: 55" wide
Repeat: No Repeat
Abrasion: Wyzenbeek – 50,000 Double Rubs
Flame Resistance: NFPA 260, Cal 117-2013
Country of Origin: China



Sutton-Charcoal
9578-30-APF



Sutton-Mercury
9578-20-APF



Sutton-Petrol
9578-50-APF



Sutton-Platinum
9578-10-APF



Sutton-Robin's Egg
9578-40-APF

TEMPLAR

A faux linen with a soft fleck of color variation that brings dimension.

Specs:

Content: 100% Polyester
Finish: Stain Resistant
Width: 57" wide
Repeat: No Repeat
Abrasion: Wyzenbeek – 50,000 Double Rubs
Flame Resistance: NFPA 260, Cal 117-2013
Country of Origin: China



Templar-Carbon
9574-20-APF



Templar-Fawn
9574-50-APF



Templar-Ink
9574-30-APF



Templar-Steel
9574-40-APF



Templar-Zinc
9574-10-APF

UPTON

A handwoven look with unique novelty yarns.

Specs:

Content: 100% Polyester
Finish: Stain Resistant
Width: 56" wide
Repeat: No Repeat
Abrasion: Wyzenbeek – 50,000 Double Rubs
Flame Resistance: NFPA 260, Cal 117-2013
Country of Origin: China



Upton-Mushroom
9580-20-APF



Upton-Putty
9580-40-APF



Upton-Slate
9580-10-APF



Upton-Stucco
9580-30-APF



[View Upton Online](#)
[Upton Spec Sheet](#)

BACKSTAGE

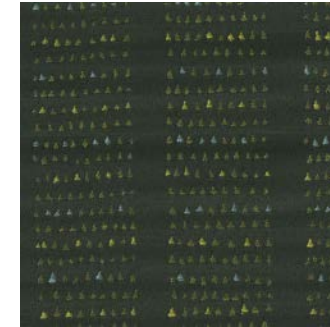
A high-sheen Crypton® fabric with a linear pattern comprised of small triangles. Backstage is perfect for a range of commercial applications.

Specs:

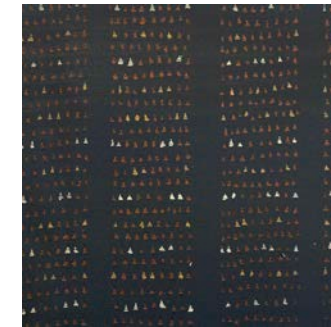
Content: 100% Polyester
Finish: Crypton® Barrier Fabric (also available with Nanotex® and Acrylic Backing)
Width: 55" wide
Repeat: 22.313" V x 10" H
Abrasion: Wyzenbeek – 63,000 Double Rubs
Flame Resistance: NFPA 260, Cal 117-2013
Country of Origin: USA



Backstage-Camel
9540-50-CYP



Backstage-Citrine
9540-70-CYP



Backstage-Copper
9540-30-CYP



Backstage-Night
9540-60-CYP



Backstage-Sapphire
9540-40-CYP



[View Backstage Online](#)
[Backstage Spec Sheet](#)

BRAVO

A bold tweed weave Crypton® performance upholstery fabric that will make a statement. Bravo's multicolor texture is an appealing option for furniture and pillows.

Specs:

Content: 68% Polyester, 29% Viscose, 3% Cotton
Finish: Crypton® Barrier Fabric (also available with Nanotex® and Acrylic Backing)
Width: 54" wide
Repeat: No Repeat
Abrasion: Wyzenbeek – 50,000 Double Rubs
Flame Resistance: NFPA 260, Cal 117-2013
Country of Origin: India



Bravo-Berry
9562-70-CYP



Bravo-Carnival
9562-40-CYP



Bravo-Cinnabar
9562-10-CYP



Bravo-Java
9562-30-CYP



Bravo-Lapis
9562-20-CYP



Bravo-Midnight
9562-80-CYP



Bravo-Moonstone
9562-50-CYP



Bravo-Ocean
9562-90-CYP



Bravo-Tweed
9562-60-CYP

IMPROV

A Crypton® performance fabric with a heathered texture and overlaying large-scale rectangles.

Specs:

Content: 100% Polyester
Finish: Crypton® Barrier Fabric (also available with Nanotex® and Acrylic Backing)
Width: 54" wide
Repeat: 17.391" V x 7.375" H
Abrasion: Wyzenbeek – 63,000 Double Rubs
Flame Resistance: NFPA 260, Cal 117-2013
Country of Origin: USA



Improv-Amber
9536-40-CYP



Improv-Copper
9536-50-CYP



Improv-Lavender
9536-70-CYP



Improv-Stone
9536-30-CYP



Improv-Turquoise
9536-80-CYP

LIMELIGHT

A Crypton® performance fabric with an overlaying, organic flowing pattern.

Specs:

Content: 66% Polyester, 34% Olefin
Finish: Crypton® Barrier Fabric (also available with Nanotex® and Acrylic Backing)
Width: 54" wide
Repeat: 12.75" V x 14.063" H
Abrasion: Wyzenbeek – 51,000 Double Rubs
Flame Resistance: NFPA 260, Cal 117-2013
Country of Origin: USA



Limelight-Aegean
9534-60-CYP



Limelight-Canyon
9534-50-CYP



Limelight-Cement
9534-30-CYP



Limelight-Desert Sun
9534-70-CYP

MARQUEE

A Crypton® performance fabric with a structured geometric pattern of interlocking rectangles.

Specs:

Content: 100% Polyester
Finish: Crypton® Barrier Fabric (also available with Nanotex® and Acrylic Backing)
Width: 55" wide
Repeat: 12.375" V x 7.438" H
Abrasion: Wyzenbeek – 51,000 Double Rubs
Flame Resistance: NFPA 260, Cal 117-2013
Country of Origin: USA



Marquee-Fire
9541-50-CYP



Marquee-Granite
9541-20-CYP



Marquee-Latte
9541-40-CYP



Marquee-Peacock
9541-70-CYP



Marquee-Plum
9541-60-CYP

MATINEE

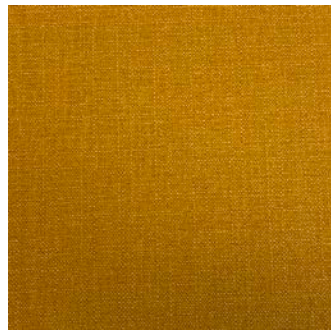
A rich solid with a subtle textured, heathered linen look, Matinee is a Crypton® performance upholstery fabric that can work in just about any upholstery application that needs well-designed, durable fabric.

Specs:

Content: 100% Polyester
Finish: Crypton® Barrier Fabric (also available with Nanotex® and Acrylic Backing)
Width: 54" wide
Repeat: No Repeat
Abrasion: Wyzenbeek – 100,000 Double Rubs
Flame Resistance: NFPA 260, Cal 117-2013
Country of Origin: China



Matinee-Loden
9535-40-CYP



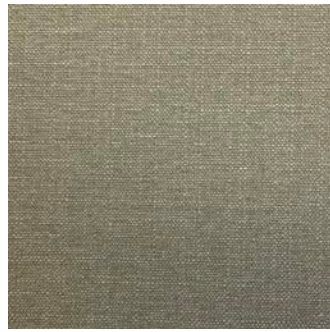
Matinee-Marigold
9535-70-CYP



Matinee-Raspberry
9535-80-CYP



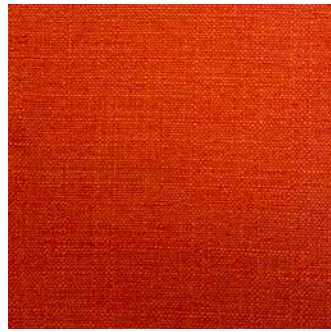
Matinee-Royal
9535-50-CYP



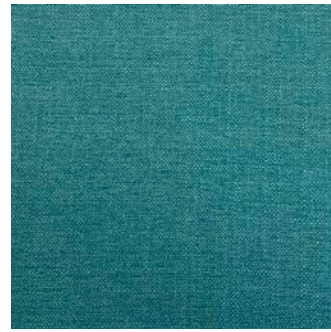
Matinee-Shale
9535-60-CYP



Matinee-Silver
9535-10-CYP



Matinee-Sunset
9535-30-CYP



Matinee-Turquoise
9535-20-CYP

SPOTLIGHT

A Crypton® performance upholstery fabric with a geometric linear pattern made up of fragmented circles.

Specs:

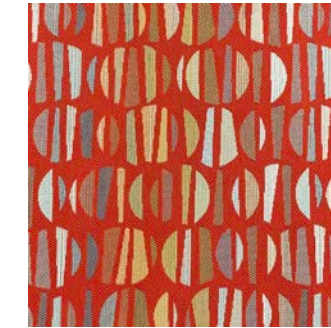
Content: 75% Polyester, 25% Olefin
Finish: Crypton® Barrier Fabric (also available with Nanotex® and Acrylic Backing)
Width: 54" wide
Railroaded: YES
Repeat: 10.5" V x 13.5" H
Abrasion: Wyzenbeek – 63,000 Double Rubs
Flame Resistance: NFPA 260, Cal 117-2013
Country of Origin: USA



Spotlight-Arctic
9539-70-CYP



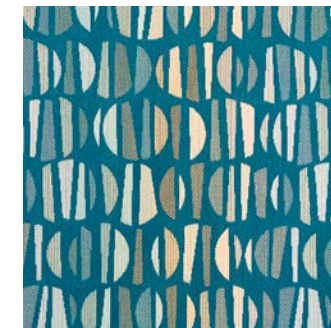
Spotlight-Mixed Berry
9539-40-CYP



Spotlight-Sunset
9539-30-CYP



Spotlight-Tiger Eye
9539-10-CYP



Spotlight-Turquoise
9539-60-CYP

STANDING OVATION

A Crypton® performance fabric with a geometric pattern formed from triangular and rectangular pieces.

Specs:

Content: 57% Polyester, 43" Olefin
Finish: Crypton® Barrier Fabric (also available with Nanotex® and Acrylic Backing)
Width: 54" wide
Repeat: 11.75" V x 14.375" H
Abrasion: Wyzenbeek – 54,000 Double Rubs
Flame Resistance: NFPA 260, Cal 117-2013
Country of Origin: USA



Standing Ovation-Copper
9542-30-CYP



Standing Ovation-Denim
9542-50-CYP



Standing Ovation-Mulberry
9542-40-CYP



Standing Ovation-Olive
9542-10-CYP



Standing Ovation-Steel
9542-20-CYP

ABBOTT

A woven textured upholstery fabric with a small balanced basket weave built with twisted multi-colored yarns creating bold colorations.

Specs:

Content: 100% Polyester
Finish: Alta™ and Knit Backing
Width: 54" wide
Repeat: No Repeat
Abrasion: Wyzenbeek – 70,000 Double Rubs
Flame Resistance: NFPA 260, Cal 117-2013
Country of Origin: China



Abbott-Fog
9264-80-AAL



Abbott-Azure
9264-60-AAL



Abbott-Fawn
9264-40-AAL



Abbott-Grass
9264-50-AAL



Abbott-Indigo
9264-30-AAL



Abbott-Jade
9264-70-AAL



Abbott-Midnight
9264-10-AAL



Abbott-Storm
9264-20-AAL



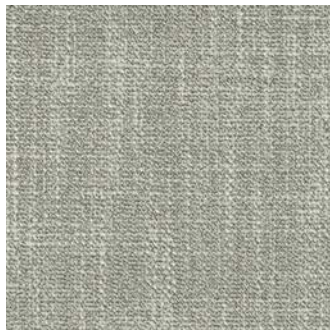
Abbott-Verde
9264-90-AAL

ALIAS

An upholstery fabric woven with a dobby weave created with twisted warp and weft slub yarns that create an attractive subtle texture.

Specs:

Content: 100% Polyester
Finish: Alta™ and Acrylic Backing
Width: 56" wide
Repeat: No Repeat
Abrasion: Wyzenbeek – 75,000 Double Rubs
Flame Resistance: NFPA 260, Cal 117-2013
Country of Origin: China



Alias-Ash
9261-30-AAL



Alias-Prussian
9261-10-AAL



Alias-Smoke
9261-20-AAL

CHARTER

A bold yarn-dyed woven upholstery fabric featuring a vertical 2-inch wide broken herringbone pattern.

Specs:

Content: 100% Polyester
Finish: Performance Finish & Acrylic Backing
Width: 56" wide
Repeat: 1.5" V x 2" H
Abrasion: Wyzenbeek – 50,000 Double Rubs
Flame Resistance: NFPA 260, Cal 117-2013
Country of Origin: China



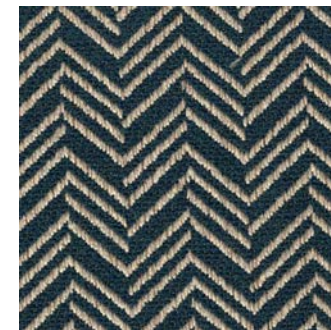
Charter-Charcoal
9257-20-APF



Charter-Cream
9257-30-APF



Charter-Mist
9257-10-APF



Charter-Navy
9257-50-APF

CONNECT

A woven upholstery fabric with a small-scaled over-dyed vertical herringbone pattern.

Specs:

Content: 95% Polyester, 5% Linen
Finish: Performance Finish & Acrylic Backing
Width: 57" wide
Repeat: 0.0" V x 0.6" H
Abrasion: Wyzenbeek – 85,000 Double Rubs
Flame Resistance: NFPA 260, Cal 117-2013
Country of Origin: China



Connect-Cream
9257-20-APF

MEDINA

A subtle yarn-dyed woven upholstery fabric built with a textured slub warp and soft chenille weft.

Specs:

Content: 43% Polyester, 40% Viscose, 17% Linen
Finish: Performance Finish & Acrylic Backing
Width: 55" wide
Repeat: No Repeat
Abrasion: Wyzenbeek – 80,000 Double Rubs
Flame Resistance: NFPA 260, Cal 117-2013
Country of Origin: China



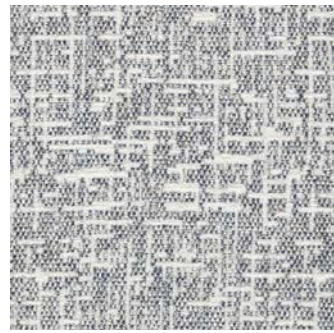
Medina-Smoke
9257-20-APF

OPTIC

A multi-textured broken lines pattern.

Specs:

Content: 100% Polyester
Finish: Alta™ and Latex Backing
Width: 55" wide
Repeat: 13.25" V x 6.38" H
Abrasion: Wyzenbeek – 70,000 Double Rubs
Flame Resistance: NFPA 260, Cal 117-2013
Country of Origin: China



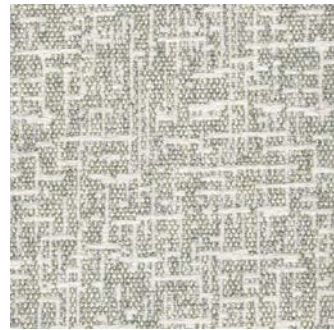
Optic-Dusk
9577-30-APF



Optic-Luna
9577-40-APF



Optic-Midnight
9577-50-APF



Optic-Mist
9577-20-APF



Optic-Storm
9577-10-APF

RHODES

A woven upholstery fabric with a diamond fretwork jacquard created with twisted slub warp and bold chenille weft yarns.

Specs:

Content: 100% Polyester
Finish: Performance Finish & Acrylic Backing
Width: 55" wide
Repeat: 2.5" V x 1.7" H
Abrasion: Wyzenbeek – 50,000 Double Rubs
Flame Resistance: NFPA 260, Cal 117-2013
Country of Origin: China



Rhodes-Granite
9265-10-APF



Rhodes-Greystone
9265-50-APF



Rhodes-Niagra
9265-20-APF



Rhodes-Redstone
9265-40-APF

SPECTRUM

A gorgeous Ikat textured plaid.

Specs:

Content: 100% Polyester
Finish: Alta™ and Acrylic Backing
Width: 55" wide
Repeat: 15" V x 6.85" H
Abrasion: Wyzenbeek – 68,000 Double Rubs
Flame Resistance: NFPA 260, Cal 117-2013
Country of Origin: China



Spectrum-Blackstone
9577-30-APF



Spectrum-Carmine
9577-40-APF



Spectrum-Indigo
9577-50-APF



Spectrum-Mineral
9577-20-APF



Spectrum-Mist
9577-10-APF



Spectrum-Taupe
9577-10-APF

VERTEX

Resimmercially inspired, Vertex has a gorgeous rope twist chenille jacquard.

Specs:

Content: 95% Polyester, 5% Linen
Finish: Performance Finish & Acrylic Backing
Width: 57" wide
Repeat: 5.5" V x 4.75" H
Abrasion: Wyzenbeek – 61,000 Double Rubs
Flame Resistance: NFPA 260, Cal 117-2013
Country of Origin: China



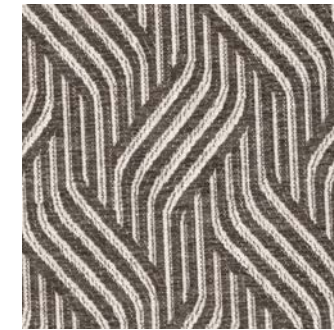
Vertex-Dove
9265-10-APF



Vertex-Linen
9265-50-APF



Vertex-River
9265-20-APF



Vertex-Truffle
9265-40-APF

Velvet Upholstery Fabrics

Designed with style and durability in mind, the velvet upholstery fabrics from

LebaTex merge an attractive look and feel with exceptional performance.

Every option comes standard with a stain repellent finish, including

Crypton® Technologies, as well as backing.

All of these fabrics meet or exceed ACT standards for commercial end use.

AMELIE

A beautiful velvet with a lustrous finish, Amelie's confetti-like pattern was achieved with the devoré (burnout) technique adding character to the versatile fabric.

Specs:

Content: 60% Rayon, 40% Polyester

Finish: Alta™ Performance Technology and Acrylic Backing

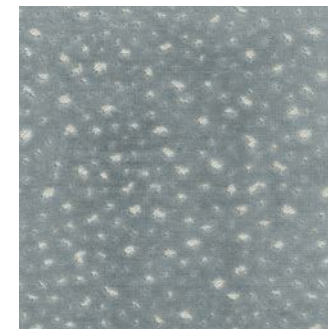
Width: 54" wide

Repeat: 14.25" H x 7" V

Abrasion: Wyzenbeek - 75,000 Double Rubs

Flame Resistance: NFPA 260, Cal 117-2013

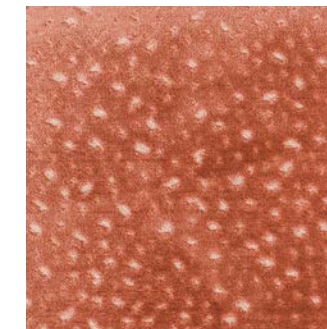
Country of Origin: Indonesia



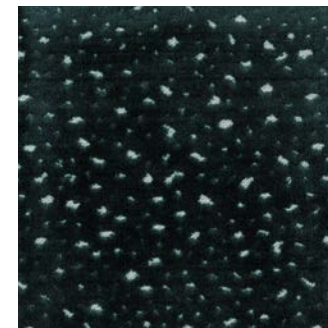
Amelie-Blue Star
1781-10-AAL



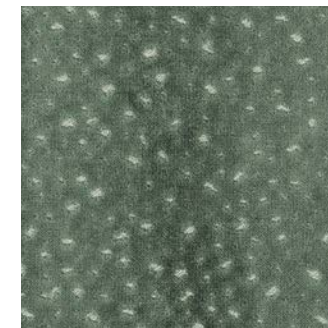
Amelie-Mushroom
1781-20-AAL



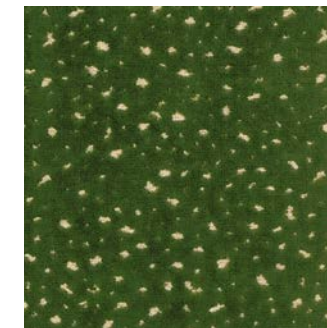
Amelie-Carnation
1781-30-AAL



Amelie-Aegean
1781-40-AAL



Amelie-Sea
1781-50-AAL



Amelie-Parsley
1781-60-AAL



[View Amelie Online](#)
[Amelie Spec Sheet](#)

COLLAGE

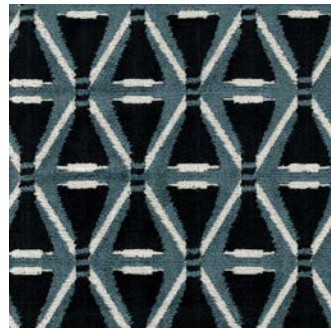
Collage is a durable tri-color chenille upholstery fabric with a modern geometric motif, featuring a devoré (burnout) technique.

Specs:

Content: 71% Spun Viscose, 29% Polyester
Finish: Alta™ Performance Technology and Acrylic Backing
Width: 54" wide
Repeat: 2.75" H x 4.25" V
Abrasion: Wyzenbeek – 50,000 Double Rubs
Flame Resistance: NFPA 260, Cal 117-2013
Country of Origin: India



Collage-Fawn
1780-30-AAL



Collage-Federal
1780-10-AAL



Collage-Silversage
1780-40-AAL



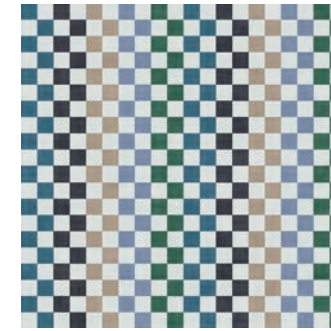
Collage-Topaz
1780-20-AAL

HENRI

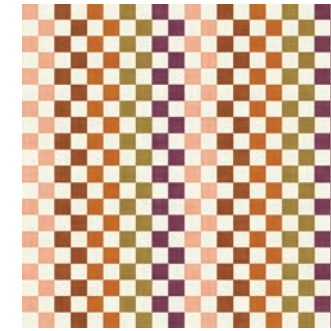
Henri is a unique twist on a classic checkerboard print, with striking colors that create a harmonious vibe. The smooth velvet epitomizes luxury with it's exceptionally soft hand.

Specs:

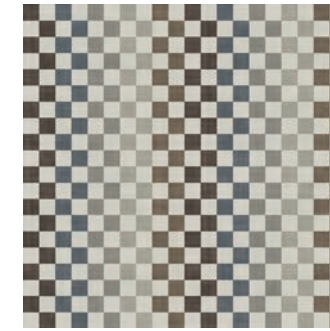
Content: 100% Polyester
Finish: Alta™ Performance Technology and Woven Backing
Width: 54" wide
Repeat: 16" H x 16" V
Abrasion: Wyzenbeek – 100,000 Double Rubs
Flame Resistance: NFPA 260, Cal 117-2013
Country of Origin: China



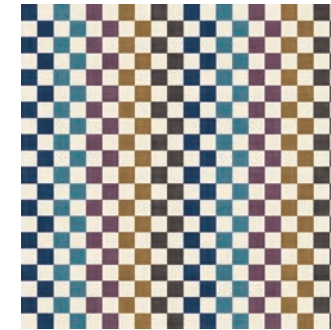
Henri-Azure Blue
1777-40-MNSAAL



Henri-Carnelian Red
1777-20-MNSAAL



Henri-Paynes Gray
1777-30-MNSAAL



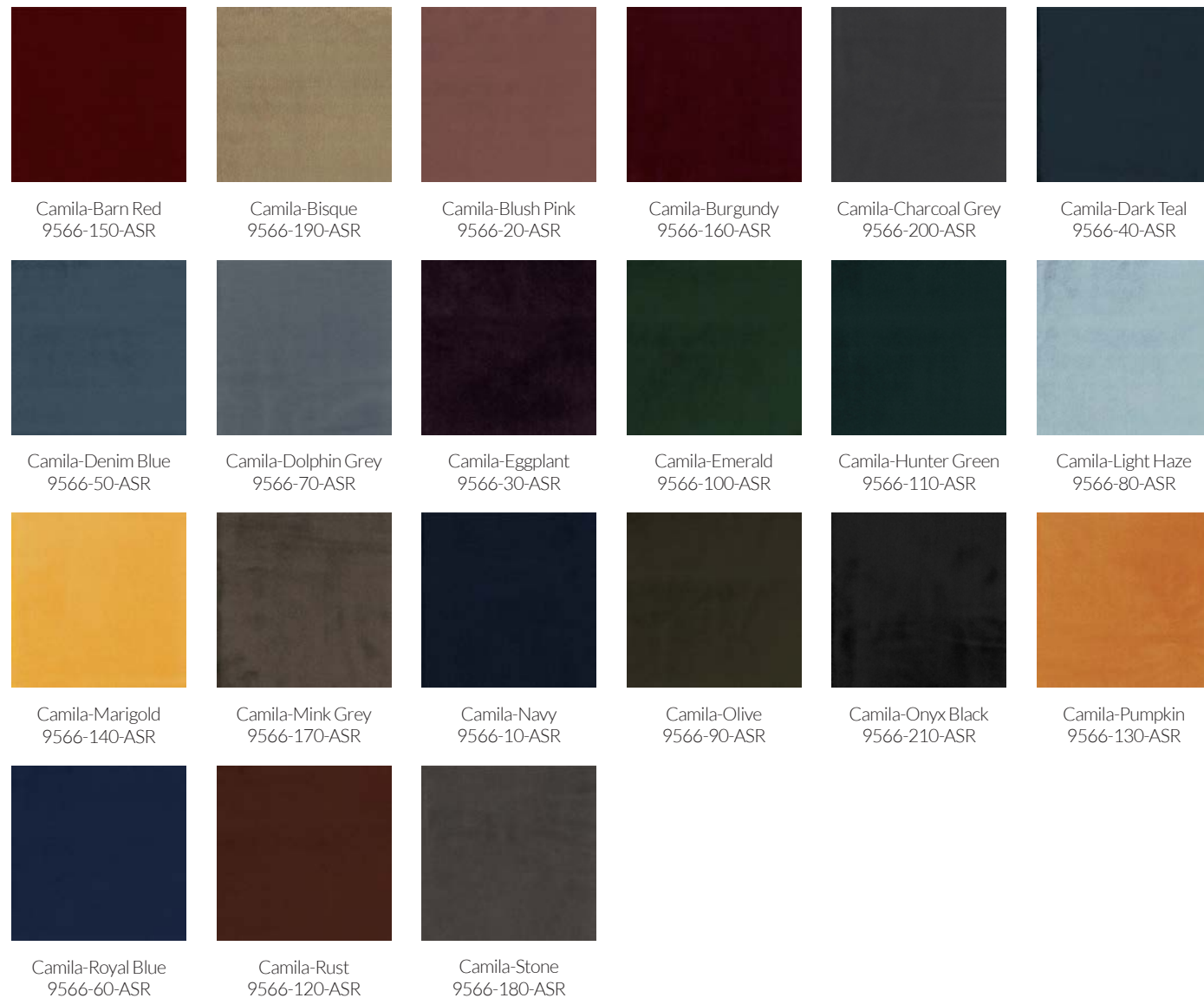
Henri-Purple Lake
1777-10-MNSAAL

CAMILA

A plush, low pile velvet with a subtle texture and low sheen.

Specs:

Content: 100% Polyester
Finish: Stain Repellent
Width: 54" wide
Repeat: No Repeat
Abrasion: Wyzenbeek – 102,000 Double Rubs
Flame Resistance: NFPA 260, Cal 117-2013
Country of Origin: Turkey



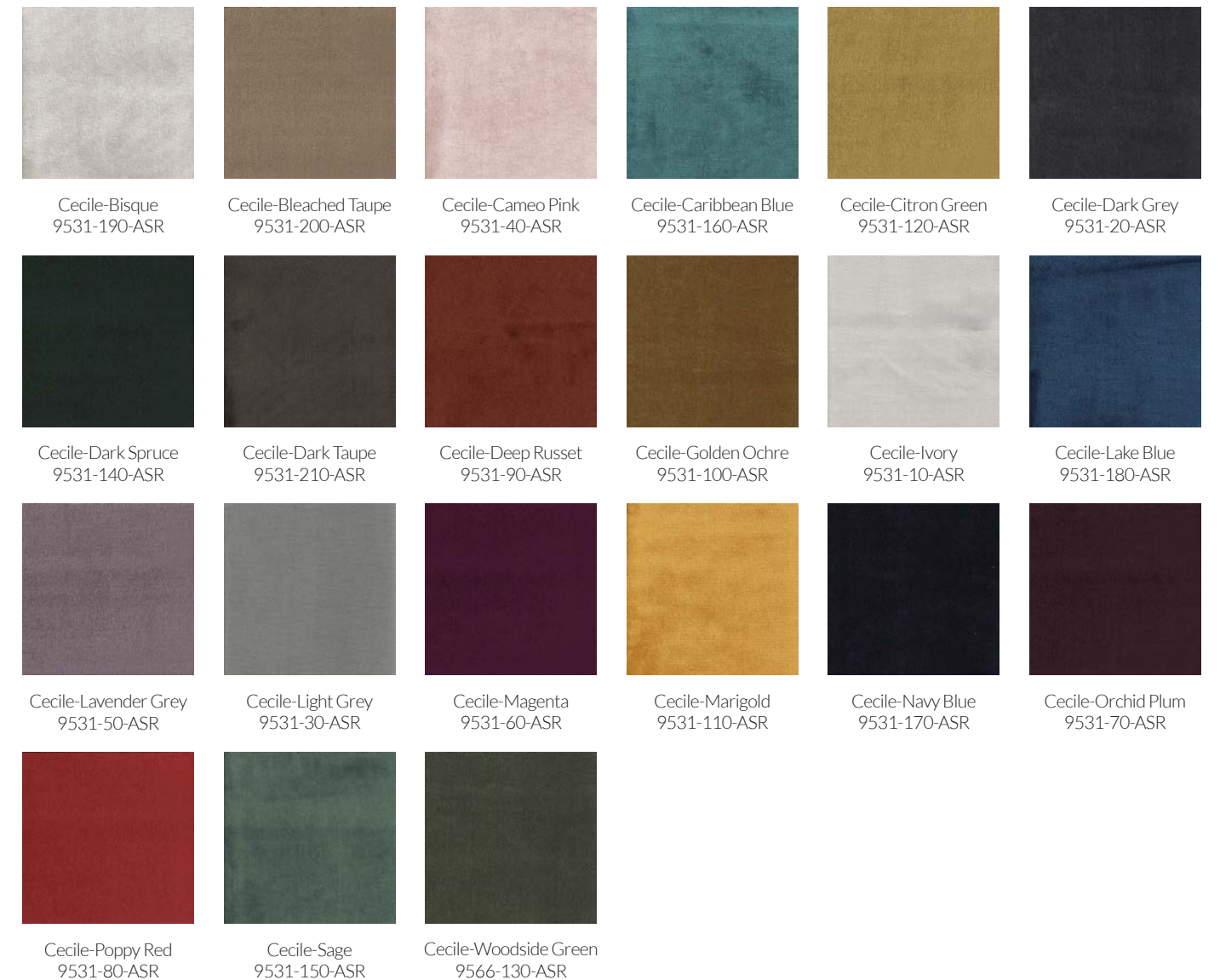
[View Camila Online](#)
[Camila Spec Sheet](#)

CECILE

A faux mohair velvet with an exceptionally soft hand and high sheen.

Specs:

Content: 100% Polyester
Finish: Stain Repellent
Width: 54" wide
Repeat: No Repeat
Abrasion: Wyzenbeek – 102,000 Double Rubs
Flame Resistance: NFPA 260, Cal 117-2013
Country of Origin: Turkey



[View Cecile Online](#)
[Cecile Spec Sheet](#)

BELMONT

A texture and slight shimmer reminiscent of Dupioni silk.

- Specs:
- Content: 100% PVC Surface, 100% Polyester Backing
- Finish: Ink and Stain Resistant
- Width: 54" wide
- Repeat: No Repeat
- Abrasion: Wyzenbeek – 100,000 Double Rubs
- Flame Resistance: NFPA 260, Cal 117-2013, UFAC Class I, IMO, MVSS
- Country of Origin: China

Faux Leather Fabrics

Designed as a cost-effective, durable alternative to leather, these coated fabrics perform in a wide range of commercial settings. With both polyurethane – including Sta-Kleen® Performance Fabrics – and polyvinyl chloride (PVC) options, there is an attractive selection of well-designed fabrics for hospitality, healthcare, education, marine, automotive and aviation applications.

All of these fabrics meet or exceed ACT standards for commercial end use.



BRYCE

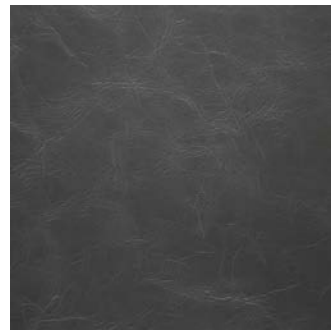
With a gorgeous subtle pattern and texture, Bryce is meant for upscale hospitality pieces. The two-tone effect and slightly distressed look give this faux leather the appeal of real leather.

Specs:

Content: 100% Polyurethane Surface, 85% Polyester, 15% Cotton Backing
Finish: Sta-Kleen® Performance Fabric
Width: 54" wide
Repeat: No Repeat
Abrasion: Wyzenbeek – 100,000 Double Rubs
Flame Resistance: NFPA 260, Cal 117-2013, UFAC Class I, IMO, MVSS
Country of Origin: China



Bryce-Bark
9572-50-PVC



Bryce-Charcoal
9572-20-PVC



Bryce-Grotto
9572-110-PVC



Bryce-Pine
9572-90-PVC



Bryce-Raisin
9572-30-PVC



Bryce-Sapphire
9572-60-PVC

CONTENDER

A gorgeous textured solid with a casual look and feel.

Specs:

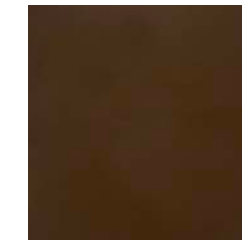
Content: 100% PVC Surface, 100% Polyester Backing
Finish: Ink and Stain Resistant
Width: 55" wide
Repeat: No Repeat
Abrasion: Wyzenbeek – 500,000 Double Rubs
Flame Resistance: NFPA 260, Cal 117-2013, UFAC Class I, IMO, MVSS
Country of Origin: China



Contender-Amber
9570-120-PVC



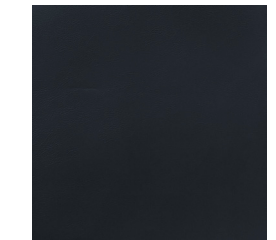
Contender-Charcoal
9570-90-PVC



Contender-Earth
9570-110-PVC



Contender-Garnet
9570-30-PVC



Contender-Midnight Blue
9570-80-PVC



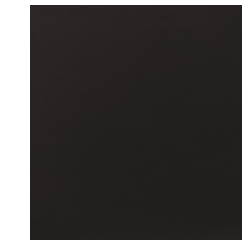
Contender-Mystic White
9570-10-PVC



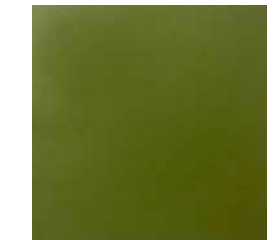
Contender-Naval Blue
9570-70-PVC



Contender-Pumpkin Spice
9570-40-PVC



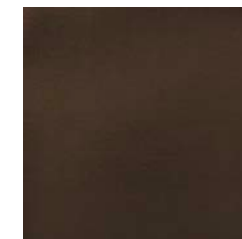
Contender-Raven
9570-20-PVC



Contender-Spring
9570-50-PVC



Contender-Tan
9570-130-PVC



Contender-Tobacco
9570-100-PVC



Contender-Vanilla
9570-60-PVC

GRASMERE

This PVC vinyl woven fabric upholstery has a weave that is slightly less structured-looking than a traditional basket weave pattern.

Specs:

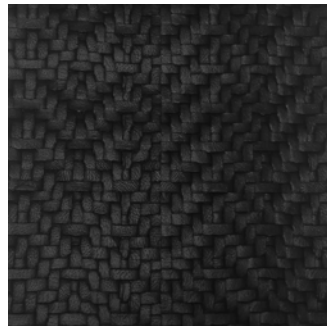
Content: 100% PVC Surface, 70% Polyester, 30% Cotton Backing
Width: 54" wide
Repeat: 3.25" V x 3.25" H
Abrasion: Wyzenbeek – 100,000 Double Rubs
Flame Resistance: NFPA 260, Cal 117-2013, UFAC Class I, MVSS
Country of Origin: China



Grasmere-Bronze
9220-40-PVC



Grasmere-Chocolate
9220-10-PVC



Grasmere-Ebony
9220-50-PVC



Grasmere-Walnut
9220-20-PVC

OGDEN

A gorgeous textured solid with a casual look and feel.

Specs:

Content: 100% PVC Surface, 100% Polyester Backing
Finish: Ink and Stain Resistant
Width: 54" wide
Repeat: No Repeat
Abrasion: Wyzenbeek – 100,000 Double Rubs
Flame Resistance: NFPA 260, Cal 117-2013, UFAC Class I, IMO, MVSS
Country of Origin: China



Ogden-Aegean
9572-50-PVC



Ogden-Ash
9572-20-PVC



Ogden-Bone
9572-110-PVC



Ogden-Dove
9572-10-PVC



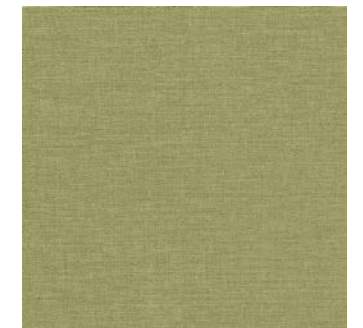
Ogden-Iron
9572-90-PVC



Ogden-Mediterranean
9572-30-PVC



Ogden-Mink
9572-60-PVC



Ogden-Pistachio
9572-70-PVC

SARATOGA

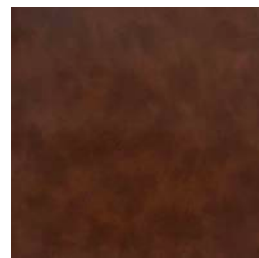
A two-tone print over classic leather colors gives it a timeless appeal.

Specs:

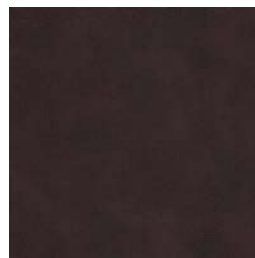
Content: 100% PVC Surface, 100% Polyester Backing
Finish: Ink and Stain Resistant
Width: 54" wide
Repeat: No Repeat
Abrasion: Wyzenbeek – 100,000 Double Rubs
Flame Resistance: NFPA 260, Cal 117-2013, UFAC Class I, IMO, MVSS
Country of Origin: China



Saratoga-Ash
9571-20-PVC



Saratoga-Beaver
9570-90-PVC



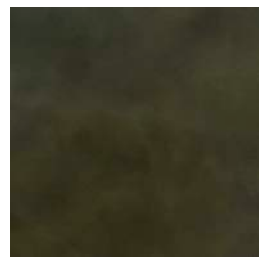
Saratoga-Clove
9571-40-PVC



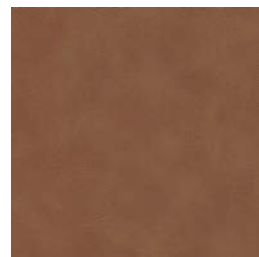
Saratoga-Coal
9571-30-PVC



Saratoga-Mule
9571-50-PVC



Saratoga-Olive
9570-10-PVC



Saratoga-Saddle
9571-70-PVC



Saratoga-Tombstone
9571-60-PVC



Saratoga-Tortilla
9571-10-PVC

SHERWOOD

A richly textured solid with a casual look and feel.

Specs:

Content: 100% Polyurethane Surface, 85% Polyester, 15% Cotton Backing
Finish: Sta-Kleen® Performance Fabric
Width: 54" wide
Repeat: No Repeat
Abrasion: Wyzenbeek – 100,000 Double Rubs
Flame Resistance: NFPA 260, Cal 117-2013, UFAC Class I, IMO
Country of Origin: China



Sherwood-Cream
9207-60-PU



Sherwood-Mink
9207-20-PU



Sherwood-Rattan
9207-10-PU



Sherwood-Taupe
9207-30-PU



Sherwood-Toffee
9207-50-PU

Indoor/Outdoor Fabrics

Designed to work well in both indoor or outdoor settings, these upholstery fabrics have the look, feel, and durability to withstand high-traffic areas and the elements they will be subjected to outside. Every option is stain and mildew resistant, as well as bleach and alcohol cleanable.

All of these fabrics meet or exceed ACT standards for commercial end use.

BARRINGTON

Barrington is a subtly textured woven upholstery that is suitable for both indoors and outdoors. This pattern features a soft woven gridwork design on a soft, heathered background. This pattern is available in 8 colorways.

Specs:

Content: 100% Bella Dura™ Solution Dyed Polyolefin

Finish: Inherently Stain Resistant

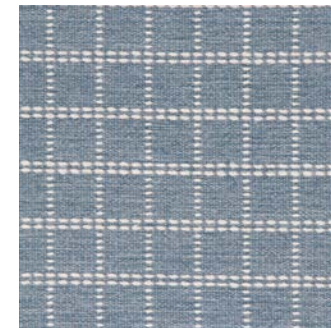
Width: 53" wide

Repeat: 1.125" V x 1" H

Abrasion: Wyzenbeek – 70,000 Double Rubs

Flame Resistance: NFPA 260, Cal 117-2013

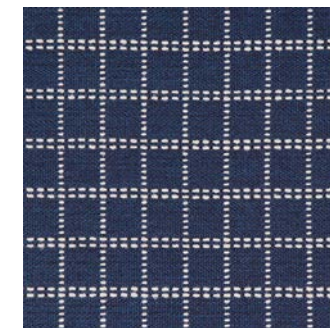
Country of Origin: USA



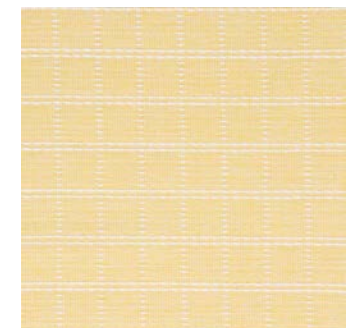
Barrington-Cerulean
9723-30-SDW



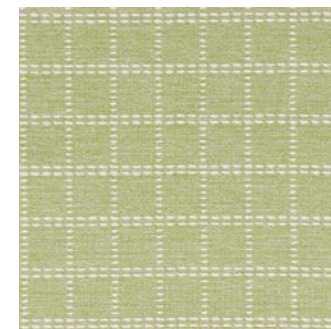
Barrington-Fog
9723-40-SDW



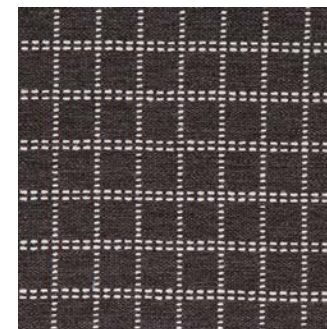
Barrington-Indigo
9723-50-SDW



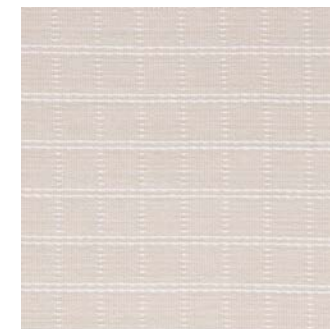
Barrington-Lemon
9723-10-SDW



Barrington-Lime
9723-20-SDW



Barrington-Onyx
9723-80-SDW



Barrington-Pearl
9723-60-SDW



Barrington-Pebble
9723-70-SDW



[View Barrington Online](#)
[Barrington Spec Sheet](#)

BIDDEFORD

Biddeford is a smooth textured woven upholstery with a bold pattern that is suitable for both indoors and outdoors. This pattern features a block print inspired geometric pattern on a soft, weathered background creating a beautiful organic look. This pattern is available in 8 colorways.

Specs:

Content: 100% Bella Dura™ Solution Dyed Polyolefin
 Finish: Inherently Stain Resistant
 Width: 55" wide
 Repeat: 6" V x 6.875" H
 Abrasion: Wyzenbeek – 100,000 Double Rubs
 Flame Resistance: NFPA 260, Cal 117-2013
 Country of Origin: USA



Biddeford-Cerulean
9722-30-SDW



Biddeford-Coral
9722-10-SDW



Biddeford-Dove
9722-50-SDW



Biddeford-Ink
9722-40-SDW



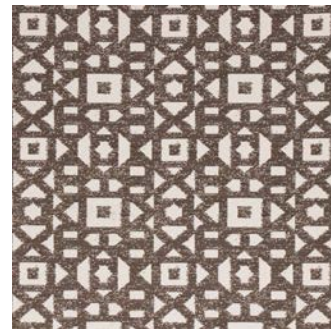
Biddeford-Lime
9722-20-SDW



Biddeford-Onyx
9723-80-SDW



Biddeford-Pebble
9723-60-SDW



Biddeford-Walnut
9723-70-SDW

CARAVAN

Caravan is a soft, subtly textured woven upholstery that is suitable for both indoors and outdoors. This pattern features a chunky weave in a solid color, making this a staple that fits into any environment. This pattern is available in 10 colorways.

Specs:

Content: 100% Bella Dura™ Solution Dyed Polyolefin
 Finish: Inherently Stain Resistant
 Width: 54" wide
 Repeat: 0.125" V x 0.375" H
 Abrasion: Wyzenbeek – 100,000 Double Rubs
 Flame Resistance: NFPA 260, Cal 117-2013
 Country of Origin: USA



Caravan-Alabaster
9478-10-SDW



Caravan-Ecru
9478-20-SDW



Caravan-Ink
9478-70-SDW



Caravan-Ivory
9478-30-SDW



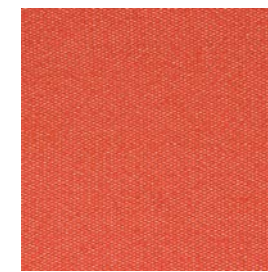
Caravan-Mist
9478-50-SDW



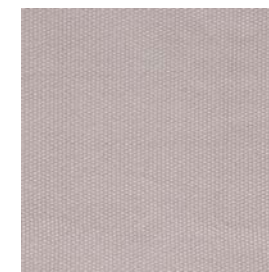
Caravan-Onyx
9478-100-SDW



Caravan-Pebble
9478-80-SDW



Caravan-Persimmon
9478-40-SDW



Caravan-Shale
9478-60-SDW



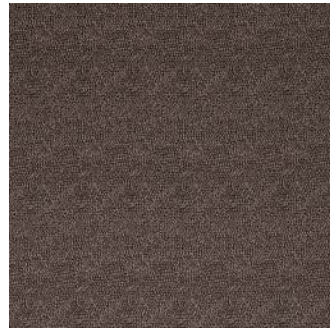
Caravan-Walnut
9478-90-SDW

CLEARWATER

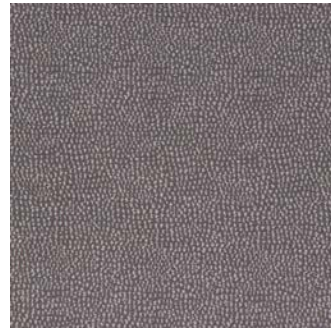
Clearwater is a textured woven upholstery that is suitable for both indoors and outdoors. This pattern features a small pebbled design over neutral colors, creating a subtle yet beautiful contrast. This pattern is available in 7 colorways.

Specs:

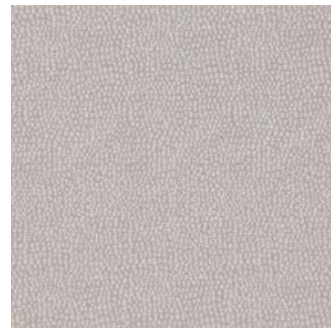
Content: 100% Bella Dura™ Solution Dyed Polyolefin
Finish: Inherently Stain Resistant
Width: 54" wide
Repeat: No Repeat
Abrasion: Wyzenbeek – 80,000 Double Rubs
Flame Resistance: NFPA 260, Cal 117-2013
Country of Origin: USA



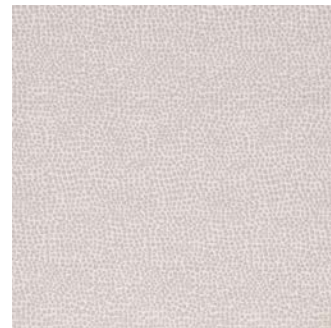
Clearwater-Brindle
9096-110-SDW



Clearwater-Charcoal
9096-70-SDW



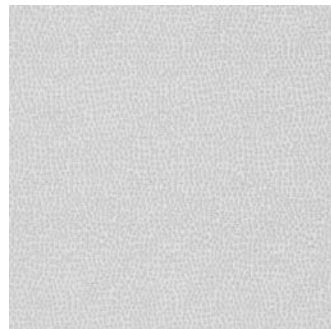
Clearwater-Cloud
9096-10-SDW



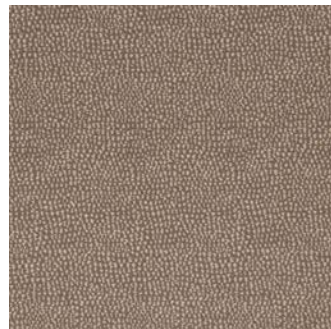
Clearwater-Dove
9096-90-SDW



Clearwater-Ink
9096-80-SDW



Clearwater-Shale
9096-60-SDW



Clearwater-Walnut
9096-100-SDW

CORAL BEACH

Coral Beach is a unique woven upholstery that is suitable for both indoors and outdoors. This pattern features an array of beautiful coral blooms on an off-white background, creating an elegant yet bold graphic design. This pattern is available in 6 colorways.

Specs:

Content: 100% Bella Dura™ Solution Dyed Polyolefin
Finish: Inherently Stain Resistant
Width: 54" wide
Repeat: 20" V x 13.5" H
Abrasion: Wyzenbeek – 100,000 Double Rubs
Flame Resistance: NFPA 260, Cal 117-2013
Country of Origin: USA



Coral Beach-Cerulean
9124-90-SDW



Coral Beach-Denim
9124-100-SDW



Coral Beach-Meadow
9124-80-SDW



Coral Beach-Onyx
9124-120-SDW



Coral Beach-Pebble
9124-110-SDW



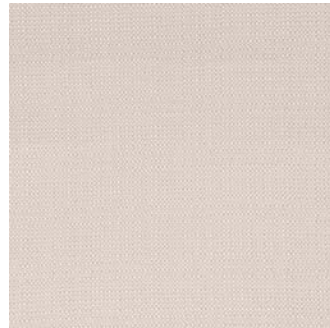
Coral Beach-Persimmon
9124-70-SDW

DUXBURY

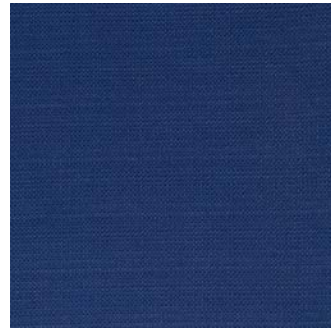
Duxbury is a softly textured woven upholstery that is suitable for both indoors and outdoors. This pattern features an irregular basket weave in a solid color that creates an organic, sturdy look. This pattern is available in 5 colorways.

Specs:

Content: 100% Bella Dura™ Solution Dyed Polyolefin
Finish: Inherently Stain Resistant
Width: 54" wide
Repeat: No Repeat
Abrasion: Wyzenbeek – 50,000 Double Rubs
Flame Resistance: NFPA 260, Cal 117-2013
Country of Origin: USA



Duxbury-Flax
9141-90-SDW



Duxbury-Indigo
9141-80-SDW



Duxbury-Ivory
9141-20-SDW



Duxbury-Shale
9141-70-SDW



Duxbury-White
9141-60-SDW

HARPSWELL

Harpwell is a softly textured woven upholstery that is suitable for both indoors and outdoors. This pattern features an array of tall ellipses on a heathered background that creates a beautiful and exciting look. This pattern is available in 9 colorways.

Specs:

Content: 100% Bella Dura™ Solution Dyed Polyolefin
Finish: Inherently Stain Resistant
Width: 55" wide
Repeat: 7.5" V x 3.5" H
Abrasion: Wyzenbeek – 80,000 Double Rubs
Flame Resistance: NFPA 260, Cal 117-2013
Country of Origin: USA



Harpwell-Chambray
9721-40-SDW



Harpwell-Coral
9721-10-SDW



Harpwell-Ink
9721-80-SDW



Harpwell-Lime
9721-30-SDW



Harpwell-Onyx
9721-70-SDW



Harpwell-Pewter
9721-60-SDW



Harpwell-Shale
9721-50-SDW



Harpwell-Turquoise
9721-20-SDW



Harpwell-Umber
9721-90-SDW

HAVERHILL

Haverhill is a soft, textured woven upholstery that is suitable for both indoors and outdoors. This pattern features a textured chenille weave on a silvery background, creating a radiant, shimmery look. This pattern is available in 4 colorways.

Specs:

Content: 100% Bella Dura™ Solution Dyed Polyolefin
Finish: Inherently Stain Resistant
Width: 54" wide
Repeat: 13.5" V x 13.625" H
Abrasion: Wyzenbeek – 70,000 Double Rubs
Flame Resistance: NFPA 260, Cal 117-2013
Country of Origin: USA



Haverhill-Chambray
9720-10-SDW



Haverhill-Ink
9720-30-SDW



Haverhill-Onyx
9720-40-SDW



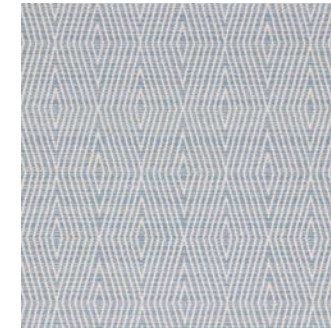
Haverhill-Shale
9720-20-SDW

IBIZA

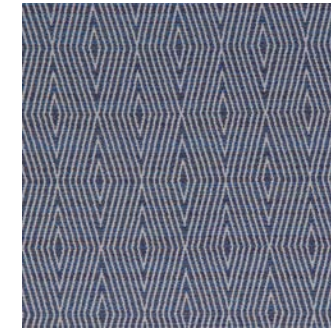
Ibiza is a soft, textured woven upholstery that is suitable for both indoors and outdoors. This pattern features an array of concentric woven diamonds that create a sturdy yet visually appealing look. This pattern is available in 8 colorways.

Specs:

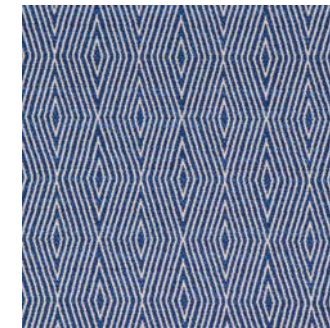
Content: 100% Bella Dura™ Solution Dyed Polyolefin
Finish: Inherently Stain Resistant
Width: 55" wide
Repeat: 6" V x 6.875" H
Abrasion: Wyzenbeek – 100,000 Double Rubs
Flame Resistance: NFPA 260, Cal 117-2013
Country of Origin: USA



Ibiza-Chambray
9027-150-SDW



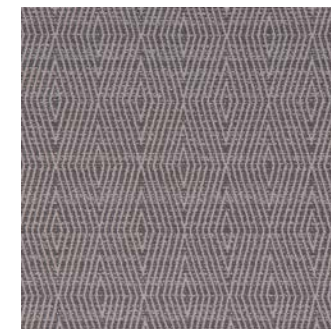
Ibiza-Ink
9027-190-SDW



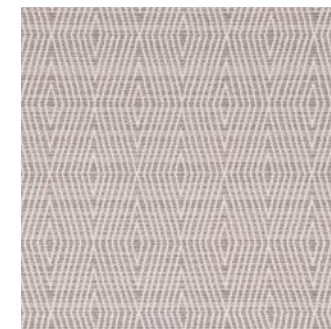
Ibiza-Atlantic
9027-180-SDW



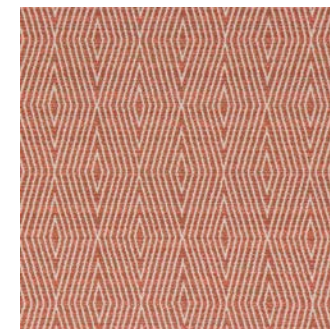
Ibiza-Pebble
9027-200-SDW



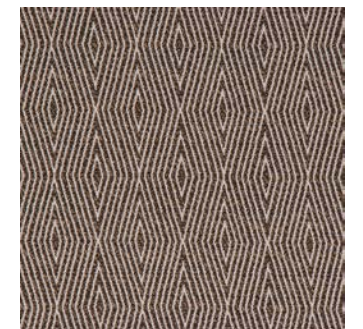
Ibiza-Pewter
9027-170-SDW



Ibiza-Shale
9027-160-SDW



Ibiza-Terracotta
9027-140-SDW



Ibiza-Umber
9027-210-SDW

IPSWICH

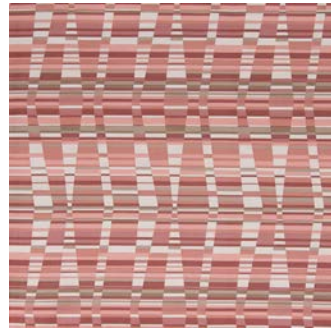
Ipswich is a sturdy woven upholstery that is suitable for both indoors and outdoors. This pattern features irregular stripes of varying color to create a dynamic look. This pattern is available in 6 colorways.

Specs:

Content: 100% Bella Dura™ Solution Dyed Polyolefin
Finish: Inherently Stain Resistant
Width: 56" wide
Repeat: 14.25" V x 7" H
Abrasion: Wyzenbeek – 100,000 Double Rubs
Flame Resistance: NFPA 260, Cal 117-2013
Country of Origin: USA



Ipswich-Cerulean
9724-40-SDW



Ipswich-Coral
9724-10-SDW



Ipswich-Cyan
9724-30-SDW



Ipswich-Dove
9724-50-SDW



Ipswich-Fiesta
9724-20-SDW



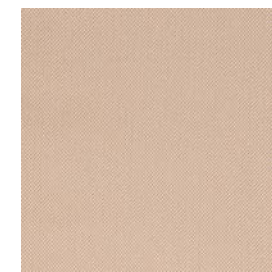
Ipswich-Ink
9724-60-SDW

MALDEN

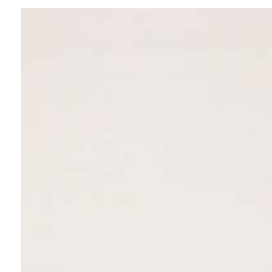
Malden is a soft woven upholstery that is suitable for both indoors and outdoors. This pattern features a tight weave that melds together to create a beautiful, soft color. This pattern is available in 10 colorways.

Specs:

Content: 100% Bella Dura™ Solution Dyed Polyolefin
Finish: Inherently Stain Resistant
Width: 54" wide
Repeat: No Repeat
Abrasion: Wyzenbeek – 100,000 Double Rubs
Flame Resistance: NFPA 260, Cal 117-2013
Country of Origin: USA



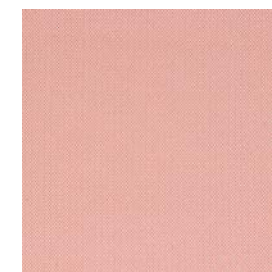
Malden-Camel
9136-120-SDW



Malden-Canvas
9136-170-SDW



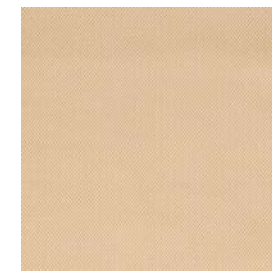
Malden-Charcoal
9136-180-SDW



Malden-Coral
9136-110-SDW



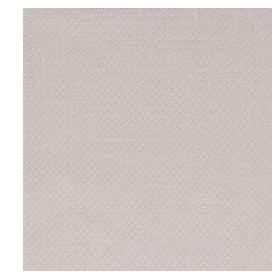
Malden-Driftwood
9136-10-SDW



Malden-Golden
9136-130-SDW



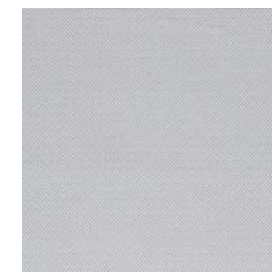
Malden-Ink
9136-160-SDW



Malden-Pebble
9136-150-SDW



Malden-Pewter
9136-40-SDW



Malden-Sky
9136-140-SDW

MARBLEHEAD

Marblehead is a soft, textured woven upholstery that is suitable for both indoors and outdoors. This pattern features a textured stria of varied colors that create a dynamic yet soft look. This pattern is available in 6 colorways.

Specs:

Content: 100% Bella Dura™ Solution Dyed Polyolefin
Finish: Inherently Stain Resistant
Width: 54" wide
Repeat: 8" V x 13.5" H
Abrasion: Wyzenbeek – 100,000 Double Rubs
Flame Resistance: NFPA 260, Cal 117-2013
Country of Origin: USA



Marblehead-Brindle
9725-60-SDW



Marblehead-Cerulean
9725-10-SDW



Marblehead-Ink
9725-30-SDW



Marblehead-Pebble
9725-50-SDW



Marblehead-Silvermine
9725-20-SDW



Marblehead-Walnut
9725-40-SDW

MERRIMAC

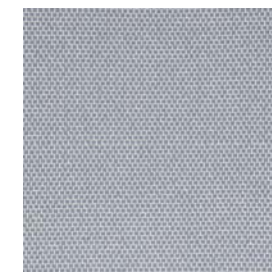
Merrimac is a soft, textured woven upholstery that is suitable for both indoors and outdoors. This pattern features a simple basket weave that creates a structured, yet organic look. This pattern is available in 10 colorways.

Specs:

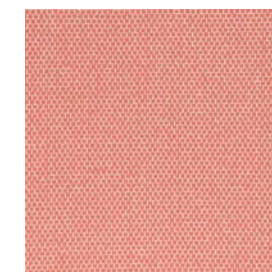
Content: 100% Bella Dura™ Solution Dyed Polyolefin
Finish: Inherently Stain Resistant
Width: 53" wide
Repeat: No Repeat
Abrasion: Wyzenbeek – 100,000 Double Rubs
Flame Resistance: NFPA 260, Cal 117-2013
Country of Origin: USA



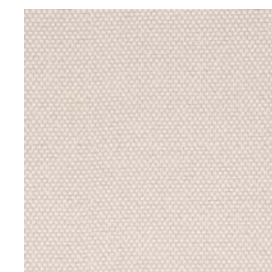
Merrimac-Celadon
9719-40-SDW



Merrimac-Chambray
9719-50-SDW



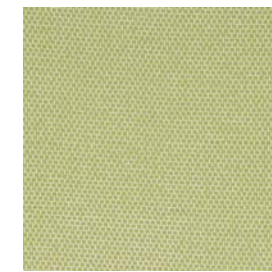
Merrimac-Coral
9719-10-SDW



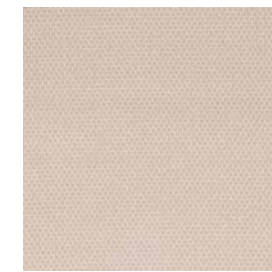
Merrimac-Flax
9719-70-SDW



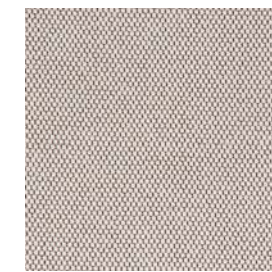
Merrimac-Goldenrod
9719-20-SDW



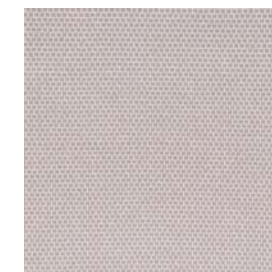
Merrimac-Meadow
9719-30-SDW



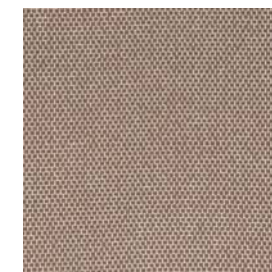
Merrimac-Pebble
9719-80-SDW



Merrimac-Pepper
9719-100-SDW



Merrimac-Shale
9719-60-SDW



Merrimac-Walnut
9719-90-SDW

MONACO

Monaco is a soft, yet sturdy woven upholstery that is suitable for both indoors and outdoors. This pattern features interlacing lines that create a beautiful geometric design with a pleasing textural contrast. This pattern is available in 3 colorways.

Specs:

Content: 100% Bella Dura™ Solution Dyed Polyolefin
Finish: Inherently Stain Resistant
Width: 54" wide
Repeat: 6.75" V x 6.875" H
Abrasion: Wyzenbeek – 100,000 Double Rubs
Flame Resistance: NFPA 260, Cal 117-2013
Country of Origin: USA



Monaco-Marine
9095-60-SDW



Monaco-Natural
9095-10-SDW



Monaco-Smoke
9095-30-SDW

MONTAUK STRIPE

Montauk Stripe is a soft, yet sturdy woven upholstery that is suitable for both indoors and outdoors. This pattern features organic vertical stripes of varying color to create a beautiful asymmetric design. This pattern is available in 6 colorways.

Specs:

Content: 100% Bella Dura™ Solution Dyed Polyolefin
Finish: Inherently Stain Resistant
Width: 54" wide
Repeat: 10.5" V x 13.625" H
Railroaded: YES
Abrasion: Wyzenbeek – 60,000 Double Rubs
Flame Resistance: NFPA 260, Cal 117-2013
Country of Origin: USA



Montauk Stripe-Atlantic
9094-120-SDW



Montauk Stripe-Caribbean
9094-110-SDW



Montauk Stripe-Cerulean
9094-100-SDW



Montauk Stripe-Coral
9094-90-SDW



Montauk Stripe-Neutral
9094-10-SDW



Montauk Stripe-Teak
9094-60-SDW

NAVAJO

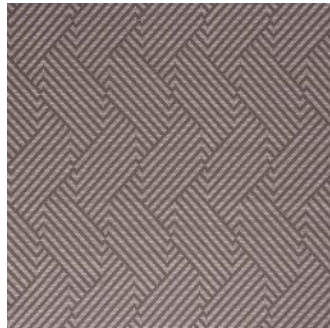
Navajo is a textured woven upholstery that is suitable for both indoors and outdoors. This pattern features a mix of chunky and tight weaving to create a dynamic parquet design. This pattern is available in 6 colorways.

Specs:

Content: 100% Bella Dura™ Solution Dyed Polyolefin
Finish: Inherently Stain Resistant
Width: 54" wide
Repeat: 12.5" V x 5.5" H
Abrasion: Wyzenbeek – 50,000 Double Rubs
Flame Resistance: NFPA 260, Cal 117-2013
Country of Origin: USA



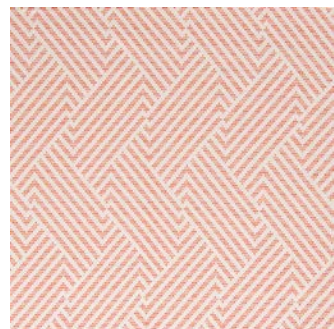
Navajo-Celadon
9490-70-SDW



Navajo-Charcoal
9490-80-SDW



Navajo-Pebble
9490-50-SDW



Navajo-Persimmon
9490-60-SDW



Navajo-Turquoise
9490-30-SDW



Navajo-Walnut
9490-90-SDW



[View Navajo Online](#)
[Navajo Spec Sheet](#)

NEWPORT

Newport is a sturdy woven upholstery that is suitable for both indoors and outdoors. This pattern features an irregular herringbone design that creates a dynamic, yet structured look. This pattern is available in 4 colorways.

Specs:

Content: 100% Bella Dura™ Solution Dyed Polyolefin
Finish: Inherently Stain Resistant
Width: 54" wide
Repeat: 1.5" V x 3.75" H
Abrasion: Wyzenbeek – 100,000 Double Rubs
Flame Resistance: NFPA 260, Cal 117-2013
Country of Origin: USA



Newport-Camel
9098-120-SDW



Newport-Cerulean
9098-90-SDW



Newport-Indigo
9098-110-SDW



Newport-Shale
9098-100-SDW



[View Newport Online](#)
[Newport Spec Sheet](#)

RIVERTON STRIPE

Riverton Stripe is a soft woven upholstery that is suitable for both indoors and outdoors. This pattern features an irregular stripe with varied widths to create a dynamic look that is pleasing to the eye. This pattern is available in 6 colorways.

Specs:

Content: 100% Bella Dura™ Solution Dyed Polyolefin
Finish: Inherently Stain Resistant
Width: 54" wide
Repeat: 0" V x 7.75" H
Railroaded: YES
Abrasion: Wyzenbeek – 100,000 Double Rubs
Flame Resistance: NFPA 260, Cal 117-2013
Country of Origin: USA



Riverton Stripe-Atlantic
9133-10-SDW



Riverton Stripe-Brindle
9133-100-SDW



Riverton Stripe-Cerulean
9133-80-SDW



Riverton Stripe-Multi
9133-70-SDW



Riverton Stripe-Persimmon
9133-60-SDW



Riverton Stripe-Shoreline
9133-90-SDW



[View Riverton Stripe Online
Riverton Stripe Spec Sheet](#)

SANIBEL

Sanibel is a textured woven upholstery that is suitable for both indoors and outdoors. This pattern features a solid-color weave with a lightly three-dimensional texture to create an attention-grabbing contrast. This pattern is available in 7 colorways.

Specs:

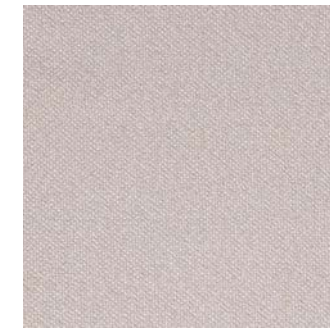
Content: 100% Bella Dura™ Solution Dyed Polyolefin
Finish: Inherently Stain Resistant
Width: 54" wide
Repeat: No Repeat
Abrasion: Wyzenbeek – 100,000 Double Rubs
Flame Resistance: NFPA 260, Cal 117-2013
Country of Origin: USA



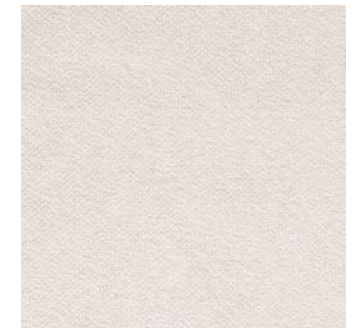
Sanibel-Brindle
9119-110-SDW



Sanibel-Cliff
9119-90-SDW



Sanibel-Dove
9119-50-SDW



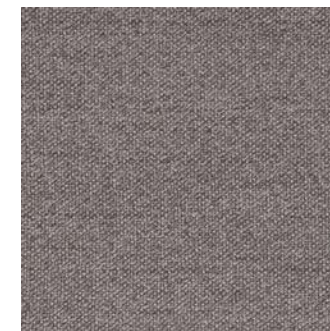
Sanibel-Ecru
9119-80-SDW



Sanibel-Indigo
9119-70-SDW



Sanibel-Pebble
9119-100-SDW



Sanibel-Shale
9119-60-SDW



[View Sanibel Online
Sanibel Spec Sheet](#)

SANTA FE

Santa Fe is a woven upholstery that is suitable for both indoors and outdoors. This pattern features Southwest herringbone in a sweeping stripe that creates a dynamic look. This pattern is available in 8 colorways.

Specs:

Content: 100% Bella Dura™ Solution Dyed Polyolefin
Finish: Inherently Stain Resistant
Width: 54" wide
Repeat: 6.5" V x 13.375" H
Abrasion: Wyzenbeek – 100,000 Double Rubs
Flame Resistance: NFPA 260, Cal 117-2013
Country of Origin: USA



Santa Fe-Cyan
9484-90-SDW



Santa Fe-Fiesta
9484-80-SDW



Santa Fe-Ink
9484-100-SDW



Santa Fe-Peacock
9484-50-SDW



Santa Fe-Pebble
9484-110-SDW



Santa Fe-Persimmon
9484-70-SDW



Santa Fe-Shale
9484-10-SDW



Santa Fe-Umber
9484-120-SDW

SOLSTICE

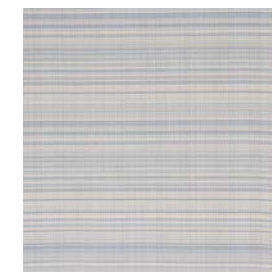
Solstice is a sturdy upholstery that is suitable for both indoors and outdoors. This pattern features a beautiful weave of different colors to create a cross-hatched blend. This pattern is available in 10 colorways.

Specs:

Content: 100% Bella Dura™ Solution Dyed Polyolefin
Finish: Inherently Stain Resistant
Width: 54" wide
Repeat: No Repeat
Abrasion: Wyzenbeek – 100,000 Double Rubs
Flame Resistance: NFPA 260, Cal 117-2013
Country of Origin: USA



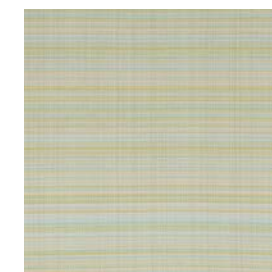
Solstice-Bayou
9031-160-SDW



Solstice-Chambray
9031-180-SDW



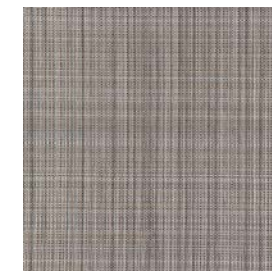
Solstice-Cliff
9031-200-SDW



Solstice-Cyan
9031-150-SDW



Solstice-Ink
9031-190-SDW



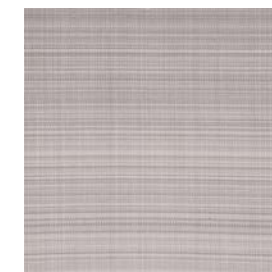
Solstice-Moon
9031-40-SDW



Solstice-Pacific
9031-130-SDW



Solstice-Persimmon
9031-140-SDW



Solstice-Shale
9031-170-SDW



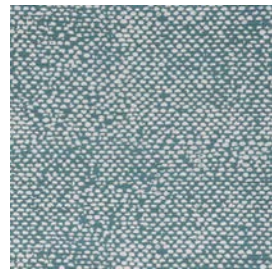
Solstice-Umber
9031-210-SDW

STONEHAVEN

Stonehaven is a sturdy upholstery that is suitable for both indoors and outdoors. This pattern features a scattered pebble texture that creates an organic and irregular design. This pattern is available in 9 colorways.

Specs:

Content: 100% Bella Dura™ Solution Dyed Polyolefin
Finish: Inherently Stain Resistant
Width: 54" wide
Repeat: 12" V x 13.875" H
Abrasion: Wyzenbeek – 100,000 Double Rubs
Flame Resistance: NFPA 260, Cal 117-2013
Country of Origin: USA



Stonehaven-Bayou
9132-120-SDW



Stonehaven-Camel
9132-160-SDW



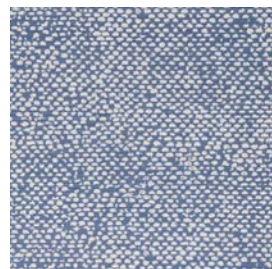
Stonehaven-Flax
9132-150-SDW



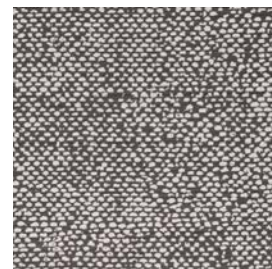
Stonehaven-Goldenrod
9132-100-SDW



Stonehaven-Lime
9132-110-SDW



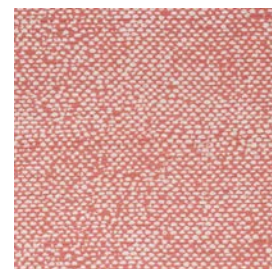
Stonehaven-Marine
9132-140-SDW



Stonehaven-Onyx
9132-170-SDW



Stonehaven-Silver
9132-130-SDW



Stonehaven-Terracotta
9132-90-SDW

WANDERER

Wanderer is a soft woven upholstery that is suitable for both indoors and outdoors. This pattern features a chunky weave and a big, bold stripe design to create a timeless look. This pattern is available in 6 colorways.

Specs:

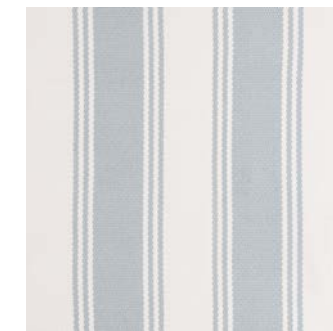
Content: 100% Bella Dura™ Solution Dyed Polyolefin
Finish: Inherently Stain Resistant
Width: 54" wide
Repeat: 6.5" V x 0" H
Railroaded: YES
Abrasion: Wyzenbeek – 100,000 Double Rubs
Flame Resistance: NFPA 260, Cal 117-2013
Country of Origin: USA



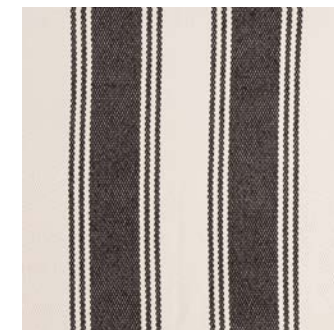
Wanderer-Atlantic
9493-40-SDW



Wanderer-Ink
9493-130-SDW



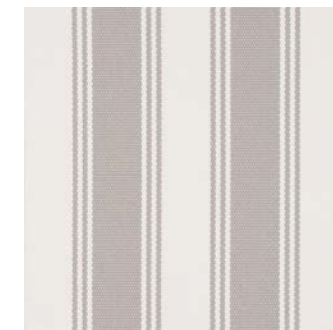
Wanderer-Mist
9493-120-SDW



Wanderer-Onyx
9493-140-SDW



Wanderer-Persimmon
9493-110-SDW



Wanderer-Shale
9493-80-SDW

GORHAM

A midscale trellis pattern with a slight sheen.

Specs:

Content: 100% Solution Dyed Polyester
Finish: Stain Resistant
Colorfastness: 1,500 Lightfast Hours
Width: 54" wide
Repeat: 2.68" V x 3.54" H
Abrasion: Wyzenbeek – 50,000 Double Rubs
Flame Resistance: NFPA 260, Cal 117-2013
Country of Origin: China



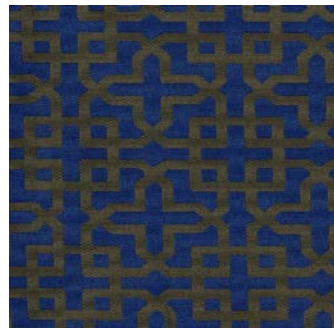
Gorham-Mandarin
9658-50-SDW



Gorham-Gold
9658-20-SDW



Gorham-Stone
9658-10-SDW



Gorham-Cobalt
9658-30-SDW



Gorham-Jade
9658-40-SDW

HANOVER

A vertical striated pattern.

Specs:

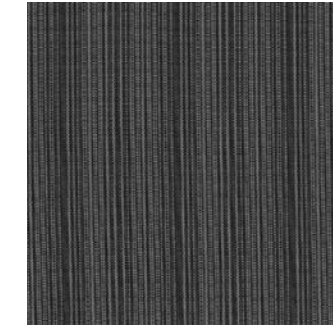
Content: 100% Solution Dyed Polyester
Finish: Stain Resistant
Colorfastness: 1,500 Lightfast Hours
Width: 54" wide
Repeat: 0" V x 2.35" H
Abrasion: Wyzenbeek – 100,000 Double Rubs
Flame Resistance: NFPA 260, Cal 117-2013
Country of Origin: China



Hanover-Ecru
9662-10-SDW



Hanover-Flax
9662-20-SDW



Hanover-Pewter
9662-50-SDW



Hanover-Indigo
9662-30-SDW



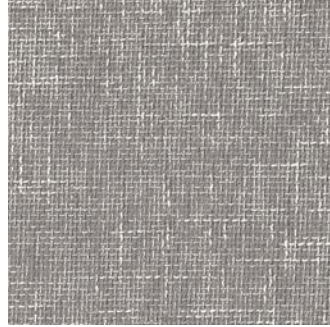
Hanover-Turquoise
9662-40-SDW

HOLLIS

A solid pattern with color variation from two yarns.

Specs:

Content: 100% Solution Dyed Polyester
Finish: Stain Resistant
Colorfastness: 1,500 Lightfast Hours
Width: 54" wide
Repeat: No Repeat
Abrasion: Wyzenbeek – 100,000 Double Rubs
Flame Resistance: NFPA 260, Cal 117-2013
Country of Origin: China



Hollis-Silver
9664-20-SDW



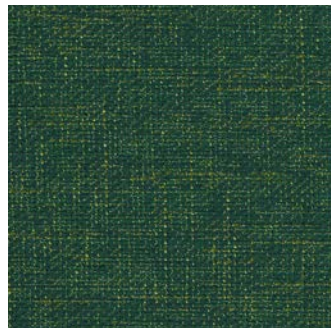
Hollis-Onyx
9664-40-SDW



Hollis-Bisque
9664-10-SDW



Hollis-Cobalt
9664-30-SDW



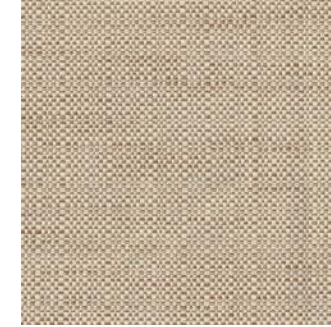
Hollis-Jade
9664-50-SDW

GRANBY

A small-scale two-toned basketweave-like texture.

Specs:

Content: 100% Solution Dyed Polyester
Finish: Stain Resistant
Colorfastness: 1,500 Lightfast Hours
Width: 54" wide
Repeat: No Repeat
Abrasion: Wyzenbeek – 100,000 Double Rubs
Flame Resistance: NFPA 260, Cal 117-2013
Country of Origin: China



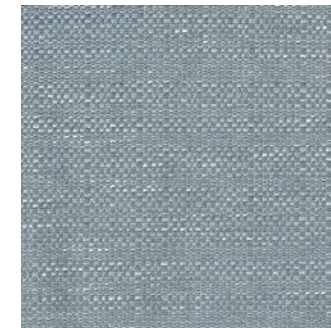
Granby-Almond
9663-30-SDW



Granby-Stone
9663-20-SDW



Granby-Bisque
9663-10-SDW



Granby-Sky
9663-40-SDW



Granby-Celery
9663-50-SDW

KEENE

An overlaying stripe and modern plaid pattern with multiple colors throughout.

Specs:

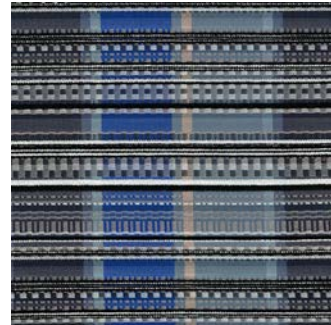
Content: 100% Solution Dyed Polyester
Finish: Stain Resistant
Colorfastness: 1,500 Lightfast Hours
Width: 54" wide
Repeat: 5.91" V x 6.5" H
Abrasion: Wyzenbeek – 66,000 Double Rubs
Flame Resistance: NFPA 260, Cal 117-2013
Country of Origin: China



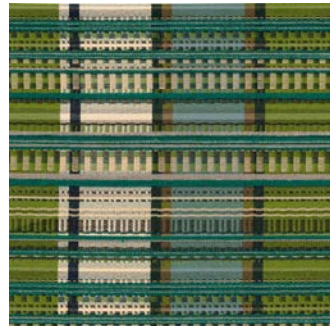
Keene-Stone
9656-30-SDW



Keene-Flame
9656-40-SDW



Keene-Cobalt
9656-10-SDW



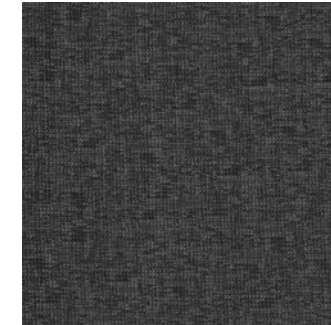
Keene-Jade
9656-20-SDW

MONROE

A subtle heathered tight weave with an attractive dyed yarn over a neutral ground. A lightweight upholstery fabric with a soft hand.

Specs:

Content: 100% Solution Dyed Polyester
Finish: Stain Resistant
Colorfastness: 1,500 Lightfast Hours
Width: 54" wide
Repeat: 6.3" V x 4.76" H
Abrasion: Wyzenbeek – 57,000 Double Rubs
Flame Resistance: NFPA 260, Cal 117-2013
Country of Origin: China



Monroe-Pewter
9665-20-SDW



Monroe-Denim
9665-10-SDW



Monroe-Jade
9665-50-SDW



Monroe-Russet
9665-30-SDW



Monroe-Poppy
9665-40-SDW

ORONO

A horizontal gradient stripe with an overlaid interlocking geometric pattern.

Specs:

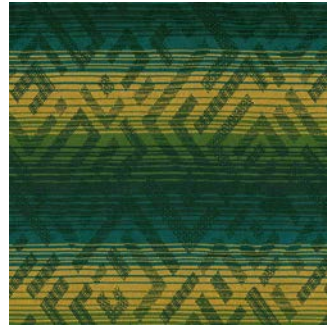
Content: 100% Solution Dyed Polyester
Finish: Stain Resistant
Colorfastness: 1,500 Lightfast Hours
Width: 54" wide
Repeat: 9.45" V x 7.36" H
Abrasion: Wyzenbeek – 50,000 Double Rubs
Flame Resistance: NFPA 260, Cal 117-2013
Country of Origin: China



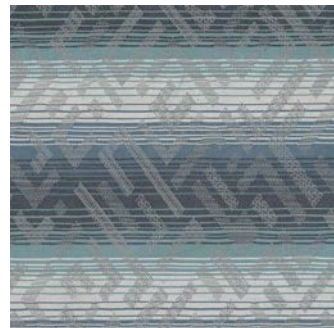
Orono-Natural
9657-50-SDW



Orono-Yellow
9657-40-SDW



Orono-Jade
9657-20-SDW



Orono-Slate
9657-10-SDW



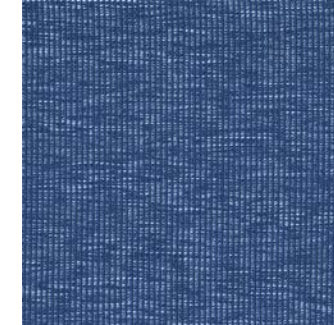
Orono-Cobalt
9657-30-SDW

SARANAC

A ribbed wave with a heathered color effect and soft hand.

Specs:

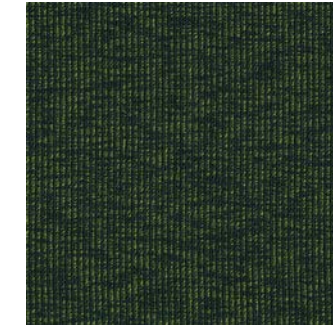
Content: 100% Solution Dyed Polyester
Finish: Stain Resistant
Colorfastness: 1,500 Lightfast Hours
Width: 54" wide
Repeat: No Repeat
Abrasion: Wyzenbeek – 100,000 Double Rubs
Flame Resistance: NFPA 260, Cal 117-2013
Country of Origin: China



Saranac-Cobalt
9661-30-SDW



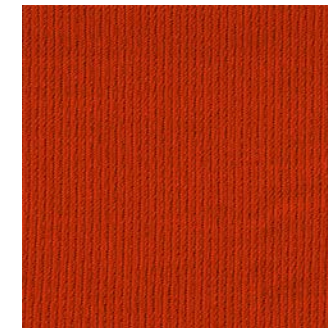
Saranac-Denim
9661-40-SDW



Saranac-Jade
9661-50-SDW



Saranac-Ecru
9661-10-SDW



Saranac-Poppy
9661-20-SDW

STRATTON

An all over two-toned distressed pattern with an exceptionally soft hand.

Specs:

Content: 100% Solution Dyed Polyester
Finish: Stain Resistant
Colorfastness: 1,500 Lightfast Hours
Width: 54" wide
Repeat: 13.43" V x 14.37" H
Abrasion: Wyzenbeek – 69,000 Double Rubs
Flame Resistance: NFPA 260, Cal 117-2013
Country of Origin: China



Stratton-Chocolate
9659-10-SDW



Stratton-Natural
9659-50-SDW



Stratton-Pewter
9659-30-SDW



Stratton-Grey
9659-20-SDW



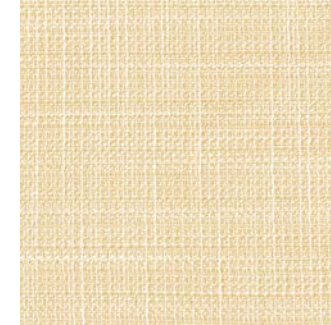
Stratton-Aqua
9659-40-SDW

WARREN

A subtle two-toned horizontal weave effect.

Specs:

Content: 100% Solution Dyed Polyester
Finish: Stain Resistant
Colorfastness: 1,500 Lightfast Hours
Width: 54" wide
Repeat: No Repeat
Abrasion: Wyzenbeek – 100,000 Double Rubs
Flame Resistance: NFPA 260, Cal 117-2013
Country of Origin: China



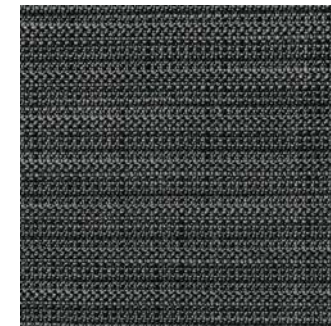
Warren-Ecru
9660-10-SDW



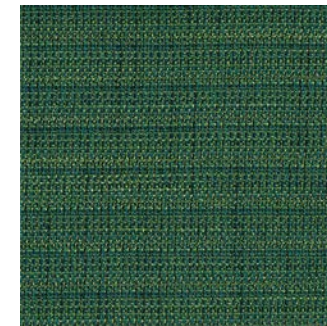
Warren-Flax
9660-40-SDW



Warren-Silver
9660-30-SDW



Warren-Onyx
9660-50-SDW



Warren-Jade
9660-60-SDW



Warren-Poppy
9660-20-SDW