



LEBATEX<sup>®</sup>

A STACY GARCIA COMPANY

25 years in business

WBENC, NEWH and ACT member

1,000+ running line fabrics tested with samples ready



association  
for contract  
textiles



# Commercial Fabric

- Fabrics tested to meet or exceed ACT minimum standards (50,000+ double-rubs)
- Fabrics sold turnkey (FR, Stain Resistant, Backing)
- Work with furniture manufacturers and fabricators to ensure quality



# Upholsteries

- High-Performance
- Crypton Barrier
- Faux Leathers
- Velvets
- Indoor/Outdoor
- Standard with Stain Repellent & Backing
- Stocked in the United States



# Sentara

- Residential Inspired Patterns & Colors
- Stain Resistant Finish
- Acrylic or Knit Backing
- Red List-Free Options



# Piermont

- Guestroom Focused Collection
- Tailored Menswear Inspired
- Stain Resistant Finish
- Knit or Acrylic Backing
- Red List-Free Options
- Prices Start at \$30 or Less



# Celebration

- Hospitality Trend-Focused Collection
- Blue, Grey, Beige and Green
- Solid and Textured Weaves
- Stain Resistant Finish
- Acrylic or Knit Backing





- Crypton Stain Repellent with Moisture Barrier
- EPA Certified to be Disinfected
- Greenguard Gold Certified
- Red List-Free
- Crypton Velvet Option Included
- Stocked in the United States
- Nanotex w/ Acrylic Backing Available





# Tidal

- Eco-Friendly Upholstery Fabric
- Made with SEAQUAL® YARN
- MindClick Rated Achiever
- Red List-Free
- Made in the USA



# Value Velvets

- High-Performance at a Value Price
- 42 running line colorways.  
Nearly 100 colorways available from the mill
- Exceeds 100,000 Double-Rubs
- Stain Repellent and Knit or Woven Backing
- Stocked in the United States



# Value Vinyls

- High-Performance at a Value Price
- Exceed 100,000 Double-Rubs
- Ink & Stain Resistant
- Stocked in the United States



# Bella Dura™ Indoor/Outdoor

- Made in the United States
- 1,500 Lightfast Hours
- Bleach and Alcohol Cleanable
- Inherently Stain Resistant
- Cradle-to-Cradle Certified
- MindClick Rated Achiever
- Red List-Free



# Outward Indoor/Outdoor

- Cost-Efficient Indoor/Outdoor Upholstery
- 1,500 Lightfast Hours
- Stain Repellent Finish
- Bleach & Alcohol Cleanable



# Draperies

- Light & Heavyweight Outer Drapes
- Decorative & Plain Sheers
- 3-Pass Integrated Blackouts
- 54" to 130" Wide Options
- Pass NFPA 701 Flame Testing
- Stocked in the United States



# Sheers

- 54"-130" Wide
- Voile, Batiste, Semi-Sheer, and Decorative Options
- Inherently FR



# Outer Drapes

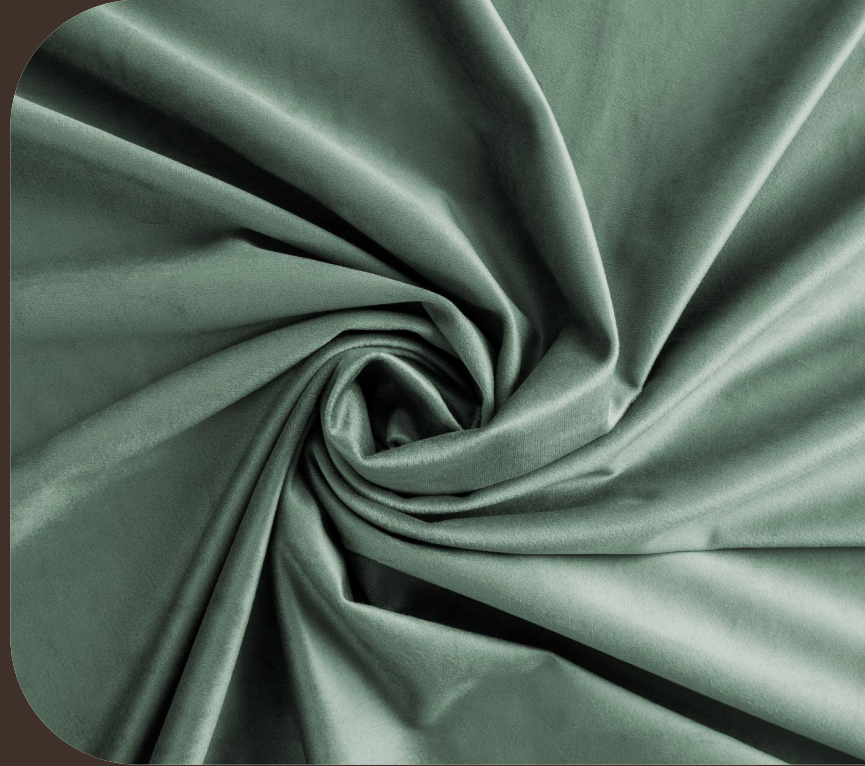
- 54"-58" Wide
- Plain, Decorative, and Novelty Yarn Options
- Inherently FR
- Fabricators can add blackout lining
- Red List- Free Options





# Velvet

- Lightweight Velvet Drapery
- Low Pile with Minimal Movement
- Inherently FR
- Fabricators can add blackout lining



# Blackout Drapes

- Integrated 3-Pass Blackout
- 54" Wide
- Inherently FR
- 300-Yard Minimum for Production  
(Model Room Quantities Available)
- Made to Order in Mexico



# Stacy Garcia for LebaTex

- Available Exclusively Through LebaTex
- Trend-Forward Upholstery and Drapery Fabrics
- Bold and Vibrant Colors and Patterns
- Meet or Exceed ACT Minimum Standards



# Base Cloths

- Stocked as PFP (Prepared For Print)
- 25 Upholstery, Drapery or Bedding Options
- Commercial Tested for Intended End Use
- Customize a LebaTex “MOD” pattern or create your own custom pattern for print

CUSTOM PRINT MOQ: 100 YARDS



# Curated Packages

Free service for commercial design professionals to jumpstart your project.

Tell us...

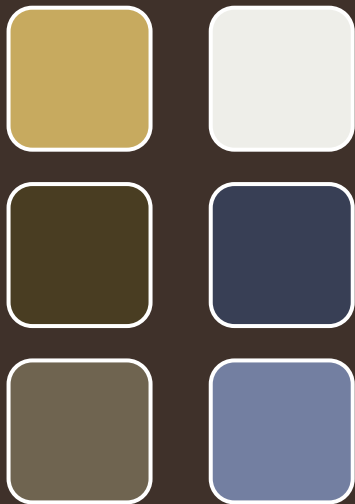
- Project Type
- Budget
- Inspiration & Color Direction
- End Use & Material Preference
- Deadline

We'll take care of the rest!

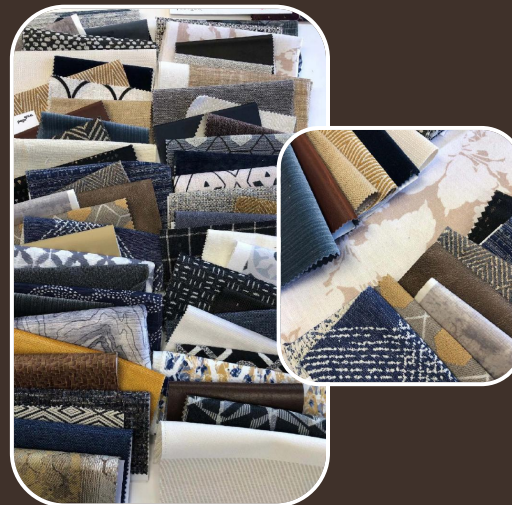


# Curated Packages

Inspiration & Direction

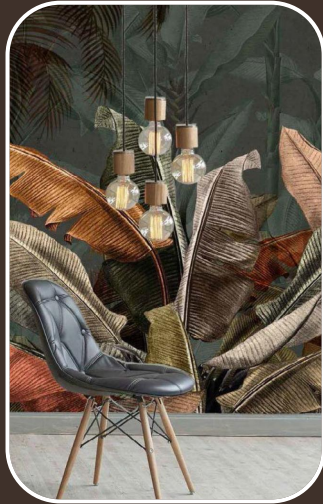
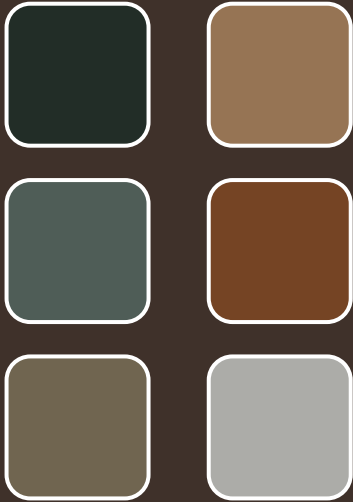


Curated Package



# Curated Packages

## Inspiration & Direction



## Curated Package



**We look forward to working with you!**

For Samples, Quotes or Orders:  
Contact your LebaTex Rep or [help@lebatex.com](mailto:help@lebatex.com)

Create an account for a one-time approval  
to order samples from [lebatex.com](http://lebatex.com).

