



LEBATEX<sup>®</sup>

A STACY GARCIA COMPANY

Draperies



# Contents

If viewing digitally, click any option below to jump to the selected page.

[Draperies](#)

[Sheers](#)

[Blackouts](#)

## Drapery Fabrics

The commercial drapery fabrics from LebaTex are designed for a wide range of design schemes. With blackouts, mid-weight, and sheer options, in both narrow and wide width, these fabrics can add a gorgeous layered effect to the window.

All of these fabrics meet or exceed ACT standards for commercial end use.

# AFFINITY

A lightweight, solid colored drapery fabric with a slight horizontal slub effect. This yarn dyed woven meets commercial flame-retardant standards for drapery.

Specs:

Content: 100% Polyester  
 Width: 54" wide  
 Repeat: No Repeat  
 Flame Resistance: NFPA 701  
 Country of Origin: India





Affinity-Storm  
9459-430-YDW



Affinity-Winter White  
9459-450-YDW

## BALLAD

Woven with a polyester blend, Ballad has a silk look that will add sophistication to any interior. This fabric meets flame retardant standards for drapery.

Specs:

Content: 100% Polyester

Width: 55" wide

Repeat: No Repeat

Flame Resistance: NFPA 701

Country of Origin: India



Ballad-Ash  
9013-150-PDW



Ballad-Beige  
9013-40-PDW



Ballad-Claret  
9013-170-PDW



Ballad-Grey  
9013-90-PDW



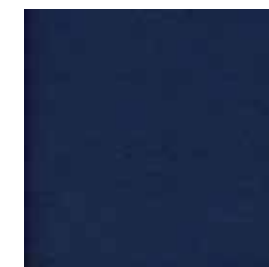
Ballad-Haze  
9013-180-PDW



Ballad-Latte  
9013-190-PDW



Ballad-Ocean  
9013-200-PDW



Ballad-Sapphire  
9013-210-PDW



Ballad-Teak  
9013-220-PDW



Ballad-Wedgewood  
9013-230-PDW



Ballad-White  
9013-240-PDW



Ballad-Winter  
9013-250-PDW

## DAYDREAM

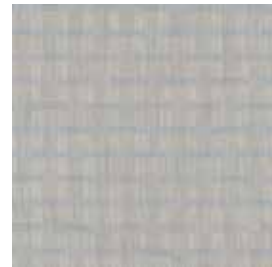
Daydream has a playful, unique bow tie woven pattern over vertical striped weaves. This fabric meets commercial flame-retardant standards for drapery.

### Specs:

Content: 100% Polyester  
Width: 59" wide  
Repeat: 1.5" V x 1.5" H  
Flame Resistance: NFPA 701  
Country of Origin: Turkey



Daydream-Coconut  
9463-30-YDW



Daydream-Glacier  
9463-50-YDW



Daydream-Icicle  
9463-60-YDW



Daydream-Linen  
9463-70-YDW

## LULLABY

A very fine yarn dyed woven drapery fabric, Lullaby is a solid colored polyester blend that meets commercial flame-retardant standards for drapery.

### Specs:

Content: 100% Polyester  
Width: 60" wide  
Repeat: No Repeat  
Flame Resistance: NFPA 701  
Country of Origin: Turkey



Lullaby-Eucalyptus  
9458-10-YDW



Lullaby-Ivory  
9458-20-YDW



Lullaby-Mineral  
9458-30-YDW



Lullaby-Oyster  
9458-40-YDW



Lullaby-Pebble  
9458-50-YDW



Lullaby-Pewter  
9458-60-YDW



Lullaby-Sand  
9458-70-YDW



Lullaby-Silver  
9458-80-YDW



Lullaby-Snow  
9458-90-YDW



Lullaby-Surf  
9458-100-YDW



Lullaby-Toast  
9458-110-YDW



Lullaby-Water  
9458-120-YDW

# NOTION

A slightly heavier room darkening drapery fabric, Notion is a solid colored yarn-dyed woven with a soft hand.

Specs:

Content: 100% Polyester  
Width: 55" wide  
Repeat: No Repeat  
Flame Resistance: NFPA 701  
Country of Origin: India



Notion-Adriatic  
9460-10-YDW



Notion-Almond  
9460-20-YDW



Notion-Blue Grey  
9460-30-YDW



Notion-Cadet  
9460-40-YDW



Notion-Celadon  
9460-50-YDW



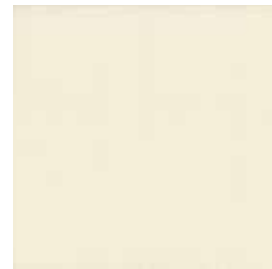
Notion-Cerulean  
9460-60-YDW



Notion-Chamois  
9460-70-YDW



Notion-Chocolate  
9460-80-YDW



Notion-Coconut  
9460-90-YDW



Notion-Crystal  
9460-100-YDW



Notion-Dew  
9460-110-YDW



Notion-Flax  
9460-120-YDW



Notion-Granite  
9460-130-YDW



Notion-Khaki  
9460-140-YDW



Notion-Lapis Blue  
9460-150-YDW



Notion-Linen  
9460-160-YDW



Notion-Marshmallow  
9460-170-YDW



Notion-Midnight  
9460-180-YDW



Notion-Mint  
9460-190-YDW



Notion-Muslin  
9460-200-YDW



Notion-Oatmeal  
9460-210-YDW



Notion-Sand  
9460-220-YDW



Notion-Seal  
9460-230-YDW



Notion-Sky  
9460-240-YDW



Notion-Slate Blue  
9460-250-YDW



Notion-Steel  
9460-260-YDW



Notion-Storm  
9460-270-YDW



Notion-Straw  
9460-280-YDW

## ODYSSEY

A light-weight piece dyed woven drapery with a subtle texture, Odyssey meets commercial flame-retardant standards for drapery.

### Specs:

Content: 100% Polyester  
Width: 54" wide  
Repeat: No Repeat  
Flame Resistance: NFPA 701  
Country of Origin: Turkey



Odyssey-Camel  
9466-10-PDW



Odyssey-Coin  
9466-20-PDW



Odyssey-Fern  
9466-30-PDW



Odyssey-Linen  
9466-40-PDW



Odyssey-Natural  
9466-50-PDW



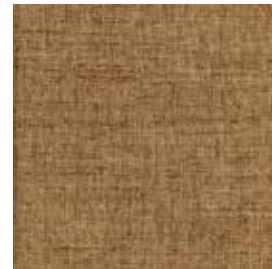
Odyssey-Pebble  
9466-60-PDW



Odyssey-Pepper  
9466-70-PDW



Odyssey-Rust  
9466-80-PDW



Odyssey-Taupe  
9466-90-PDW



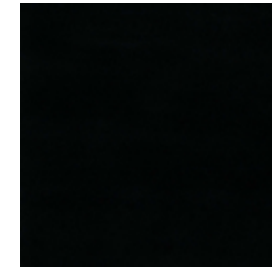
Odyssey-Water  
9459-280-YDW

## POSH

A velvet with a low pile and an exceptionally soft hand.

### Specs:

Content: 100% IFR Polyester  
Width: 58" wide  
Repeat: No Repeat  
Flame Resistance: NFPA 701  
Country of Origin: China



Posh-Black  
9684-30-PDW



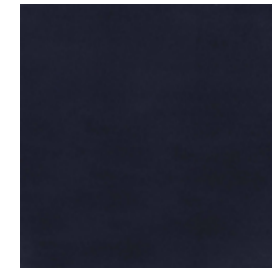
Posh-Cabernet  
9684-40-PDW



Posh-Cashmere  
9684-90-PDW



Posh-Hunter  
9684-50-PDW



Posh-Navy  
9684-120-PDW



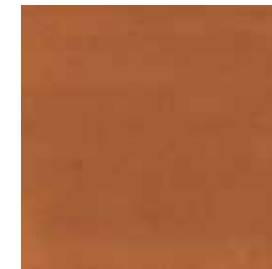
Posh-Oat  
9684-80-PDW



Posh-Red  
9684-70-PDW



Posh-Silver  
9684-100-PDW



Posh-Spice  
9684-60-PDW



Posh-Spruce  
9684-110-PDW

## RESOLVE

This light weight drapery fabric has a nice linen texture and soft hand. Resolve is a yarn dyed woven that meets commercial flame-retardant standards for drapery fabric.

### Specs:

Content: 100% Polyester  
Width: 54" wide  
Repeat: No Repeat  
Flame Resistance: NFPA 701  
Country of Origin: Turkey



Resolve-Abalone  
9461-10-YDW



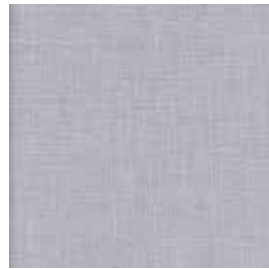
Resolve-Azure  
9461-20-YDW



Resolve-Bisque  
9461-30-YDW



Resolve-Cement  
9461-40-YDW



Resolve-Cloud  
9461-50-YDW



Resolve-Flannel  
9461-70-YDW



Resolve-Lake  
9461-60-YDW



Resolve-Oyster  
9461-80-YDW



Resolve-Raffia  
9461-90-YDW



Resolve-Shale  
9461-100-YDW



Resolve-Toast  
9461-110-YDW

## TOUCHSTONE

A piece dyed woven, Touchstone is a heavier weight, room darkening drapery fabric with slight color variation. This fabric meets flame retardant standards for commercial drapery.

### Specs:

Content: 100% Polyester  
Width: 58" wide  
Repeat: No Repeat  
Flame Resistance: NFPA 701  
Country of Origin: Turkey



Touchstone-Chamois  
9465-70-PDW



Touchstone-Cyan  
9465-80-PDW



Touchstone-Dew  
9465-90-PDW



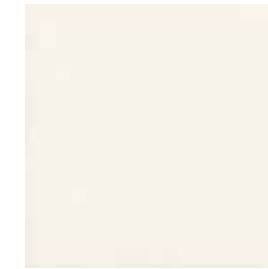
Touchstone-Doeskin  
9465-100-PDW



Touchstone-Ecru  
9465-120-PDW



Touchstone-Fog  
9465-140-PDW



Touchstone-Icicle  
9465-160-PDW



Touchstone-Marshmallow  
9465-210-PDW



Touchstone-Mint  
9465-220-PDW



Touchstone-Nutmeg  
9465-230-PDW



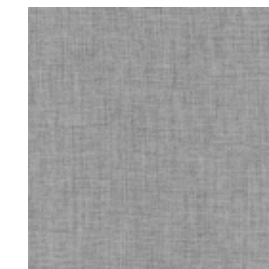
Touchstone-Oatmeal  
9465-240-PDW



Touchstone-Otter  
9465-250-PDW



Touchstone-Powder  
9465-270-PDW



Touchstone-Rain  
9465-280-PDW



Touchstone-Royal  
9465-290-PDW





Touchstone-Seaglass  
9465-300-PDW



Touchstone-Silver  
9465-310-PDW



Touchstone-Stone  
9465-330-PDW

## WONDROUS

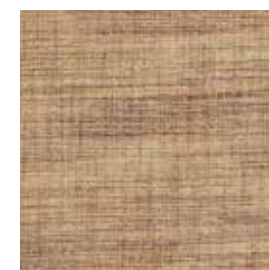
This textured drapery fabric is woven with multi-colored yarn and has an attractive heathered appearance. This fabric meets flame retardant standards for commercial drapery.

### Specs:

Content: 100% Polyester  
Width: 54" wide  
Repeat: No Repeat  
Flame Resistance: NFPA 701  
Country of Origin: India



Wondrous-Blue Lagoon  
9462-10-YDW



Wondrous-Cashew  
9462-20-YDW



Wondrous-Celadon  
9462-30-YDW



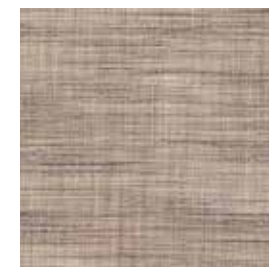
Wondrous-Champagne  
9462-40-YDW



Wondrous-Cyan  
9462-50-YDW



Wondrous-Ocean  
9462-60-YDW



Wondrous-Pepper  
9462-70-YDW



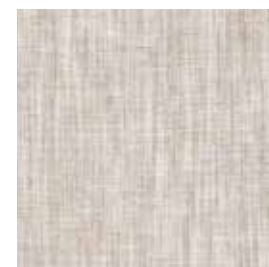
Wondrous-Rain  
9462-80-YDW



Wondrous-Seal  
9462-90-YDW



Wondrous-Sienna  
9462-100-YDW



Wondrous-Silver  
9462-110-YDW

## FANFARE

A beautifully textured drapery cloth featuring a large-scale scallop pattern reminiscent of traditional block print methods.

### Specs:

Base Cloth: Hermosa  
Content: 100% Polyester  
Width: 59" wide  
Repeat: 25.25" V x 18" H  
Flame Resistance: NFPA 701  
Country of Origin: Mexico



Fanfare-Cobalt  
1762-30-HER



Fanfare-Golden  
1762-50-HER



Fanfare-Ice  
1762-20-HER



Fanfare-Jade  
1762-40-HER



Fanfare-Onyx  
1762-60-HER



Fanfare-Paprika  
1762-70-HER



Fanfare-Sand  
1762-10-HER

## SHAPES

A fun and contemporary drapery cloth featuring scattered shapes depicted in a soft hand-painted technique over a stippled background.

### Specs:

Base Cloth: Simon  
Content: 100% Polyester  
Width: 59" wide  
Repeat: 13.5" V x 13.5" H  
Flame Resistance: NFPA 701  
Country of Origin: Mexico



Shapes-Cobalt  
1767-20-SIM



Shapes-Golden  
1767-40-SIM



Shapes-Ice  
1767-10-SIM



Shapes-Jade  
1767-60-SIM



Shapes-Onyx  
1767-30-SIM

## SPRITZ

An organic vertical stripe drapery with a variegated and multi-layered liquid texture effect.

### Specs:

Base Cloth: Simon  
Content: 100% Polyester  
Width: 59" wide  
Repeat: 13.5" V x 13.5" H  
Flame Resistance: NFPA 701  
Country of Origin: Mexico



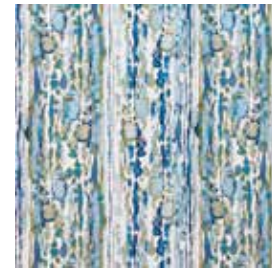
Spritz-Alabaster  
1763-10-SIM



Spritz-Navy  
1763-30-SIM



Spritz-Sage  
1763-40-SIM



Spritz-Sky  
1763-20-SIM



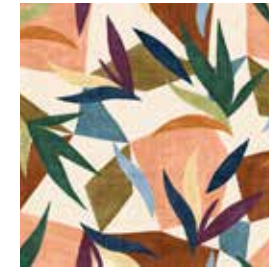
Spritz-Terracotta  
1763-50-SIM

## VERVE

Verve is a large-scale, eye-catching botanical print with a balanced composition, inspired by Matisse's painterly qualities, and paper cut technique.

### Specs:

Base Cloth: Simon  
Content: 100% Polyester  
Width: 59" wide  
Repeat: 27" V x 27" H  
Flame Resistance: NFPA 701  
Country of Origin: Mexico



Verve-Apricot  
1775-10-SIM



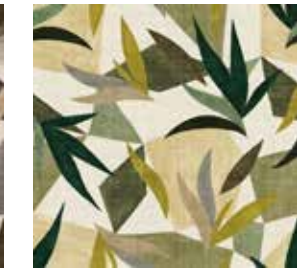
Verve-Indigo  
1775-20-SIM



Verve-Orchid  
1775-30-SIM



Verve-Pewter  
1775-40-SIM



Verve-Viridian Green  
1775-50-SIM

## Sheers

These lightweight sheer fabrics are designed to add a touch of elegance and a little bit of privacy to a space. With a nice selection of colors, patterns and textures, these fabrics have versatility to work in a variety of project types.

### APEX

Featuring a large striated vertical stripe woven on a linen-like sheer texture. Apex is a wide width sheer available in 2 shimmering stripe colors of silver or sandy beige on a white sheer base.

Specs:

Content: 100% Polyester  
Width: 118" wide  
Repeat: 14" V x 23" H  
Flame Resistance: NFPA 701  
Country of Origin: Turkey



Apex-Sand  
9228-20-SHR



Apex-Silver  
9228-10-SHR

## BRIO

Brio is an ample multi-colored textured sheer available in 5 colorways.

### Specs:

Content: 100% Polyester  
Width: 54" wide  
Repeat: No Repeat  
Flame Resistance: NFPA 701  
Country of Origin: India



Brio-Arctic  
9241-10-SHR



Brio-Eucalyptus  
9241-40-SHR



Brio-Sahara  
9241-20-SHR



Brio-Shark  
9241-50-SHR



Brio-Steam  
9241-30-SHR

## TRANQUILITY

A thick, textural linen-look quality, Tranquility is a narrow width sheer available in 5 neutral colorways.

### Specs:

Content: 100% Polyester  
Width: 54" wide  
Repeat: No Repeat  
Flame Resistance: NFPA 701  
Country of Origin: India



Tranquility-Arctic  
9239-10-SHR



Tranquility-Coconut  
9239-20-SHR



Tranquility-Granola  
9239-40-SHR



Tranquility-Seal  
9239-50-SHR

## ZEST

A narrow width sheer woven with thick and thin slubbed yarn horizontally throughout, Zest is available in 2 neutral colorways.

### Specs:

Content: 100% Polyester  
Width: 54" wide  
Repeat: No Repeat  
Flame Resistance: NFPA 701  
Country of Origin: India



Zest-Eucalyptus  
9242-20-SHR



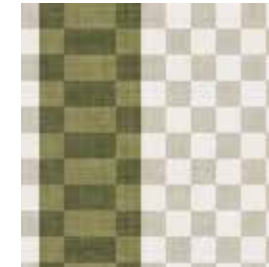
Zest-Linen  
9242-10-SHR

## REVEL

Revel is a simple, yet refined sheer drapery, giving a whole new feeling to a traditional checkerboard.

### Specs:

Base Cloth: Batiste  
Content: 100% Polyester  
Width: 59" wide  
Repeat: 27" V x 28.5" H  
Flame Resistance: NFPA 701  
Country of Origin: Turkey



Revel-Forest Green  
1778-30-BAT



Revel-Navy Blue  
1778-20-BAT



Revel-VanDyke Brown  
1778-10-BAT

## CALLISTO

Callisto is a wide-width sheer with a reflective sheen and dainty celestial vertical detailing. This pattern comes in a creamy ivory, a dusty silver, and a bright icy white.

### Specs:

Content: 100% Polyester  
Width: 117" wide  
Repeat: 5.5" V x 0" H  
Flame Resistance: NFPA 701, ULC/S109  
Country of Origin: Turkey  
Sustainability: OEKO-TEX® Standard 100



Callisto-Ivory  
9696-20-SHR



Callisto-Silver  
9696-30-SHR



Callisto-White  
9696-10-SHR

## CASCADE

Cascade is a unique wide-width sheer drapery. Two novelty yarns are delicately woven into the ground cloth to look as if they are floating in air. This pattern is available in 3 colorways.

### Specs:

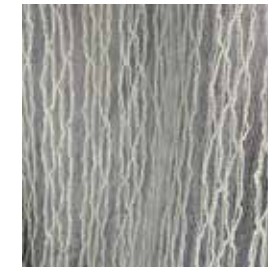
Content: 100% Polyester  
Width: 124" wide  
Repeat: 3.41" V x 1.97" H  
Flame Resistance: NFPA 701  
Country of Origin: Turkey



Cascade-Alloy  
9097-10-SHR



Cascade-Cream  
9097-30-SHR



Cascade-Smoke  
9097-40-SHR

## GALACTIC

Galactic is a wide-width sheer that features a small-scale multi-dimensional grid design. This pattern is available in a bright icy white.

### Specs:

Content: 100% Polyester  
Width: 110" wide  
Repeat: 1.2" V x 1.2" H  
Flame Resistance: NFPA 701  
Country of Origin: China



Galactic-Ice  
9688-10-SHR

## LUNA VOILE

This wide-width drapery is classic and chic. It is a soft and luxurious voile with a dry finish. This pattern is available in 3 different colorways.

### Specs:

Content: 100% Polyester  
Width: 118" wide  
Repeat: No Repeat  
Flame Resistance: NFPA 701  
Country of Origin: China



Luna Voile-Champagne  
9698-30-SHR



Luna Voile-Comet Blue  
9698-10-SHR



Luna Voile-Silver  
9698-20-SHR

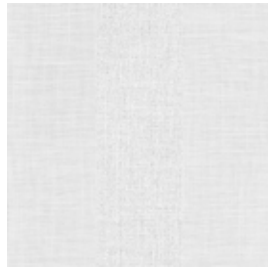


## MERIDIAN

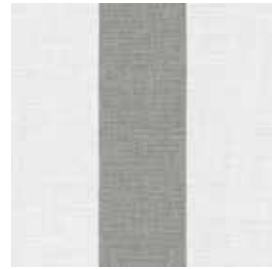
Meridian is a wide-width woven sheer that features a wide sea-side stripe with a delicate luminescent thread. Meridian is available in 3 colorways.

### Specs:

Content: 100% Polyester  
Width: 118" wide  
Repeat: 0.0" V x 8.4" H  
Flame Resistance: NFPA 701  
Country of Origin: Germany



Meridian-Ice  
9689-10-SHR



Meridian-Pewter  
9689-20-SHR



Meridian-Sand  
9689-30-SHR

## NEBULA

Nebula is a beautiful wide-width sheer that features a unique embroidered design detail that creates a rhythmic wave, reminiscent of an Ogee pattern. This pattern is available in a brilliant silver.

### Specs:

Content: 100% Polyester  
Width: 114" wide  
Repeat: 0.63" V x 1.42" H  
Flame Resistance: NFPA 701  
Country of Origin: China



Nebula-Silver Cloud  
9691-10-SHR

## NEPTUNE

Neptune is a wide-width sheer that features a combination of thin and thick yarns throughout the warp and weft, creating a textured, larger scale weave. Neptune is available in a soft white.

### Specs:

Content: 100% Polyester  
Width: 110" wide  
Repeat: No Repeat  
Flame Resistance: NFPA 701  
Country of Origin: China



Neptune-White  
9548-10-SHR

## NEUTRON

Neutron is a wide-width sheer with an ample and sophisticated linen texture. It has a dryer hand and lends itself well to any application, from corporate to casual. This pattern is available in 4 different colorways.

### Specs:

Content: 100% Polyester  
Width: 130" wide  
Repeat: No Repeat  
Flame Resistance: NFPA 701, ULC/S109  
Country of Origin: Turkey



Neutron-Clay  
9692-30-SHR



Neutron-Ivory  
9692-20-SHR



Neutron-Marzipan  
9692-40-SHR



Neutron-White  
9692-10-SHR

## OMEGA

Omega is a light, elegant, wide-width sheer with a subtle horizontal silk-like texture. This pattern is available in 3 different colorways.

### Specs:

Content: 100% Polyester  
Width: 130" wide  
Repeat: No Repeat  
Flame Resistance: NFPA 701, ULC/S109  
Country of Origin: Turkey



Omega-Champagne  
9694-20-SHR



Omega-Smoke  
9694-30-SHR



Omega-White  
9694-10-SHR

## ORBIT

Orbit is a wide-width sheer with a multi-dimensional vertical and horizontal weave. It has a softer but structured hand. This pattern is available in 4 colorways.

### Specs:

Content: 100% Polyester  
Width: 130" wide  
Repeat: No Repeat  
Flame Resistance: NFPA 701, ULC/S109  
Country of Origin: Turkey



Orbit-Champagne  
9695-20-SHR



Orbit-Fog  
9695-40-SHR



Orbit-Putty  
9695-30-SHR



Orbit-White  
9695-10-SHR

## PULSAR

Pulsar is a wide-width sheer that features vertical multi-colored threads and textures that create an organic, modern look. This pattern is available in a deep grey and a cool sea green.

### Specs:

Content: 100% Polyester  
Width: 106" wide  
Repeat: 20.08" V x 14.96" H  
Flame Resistance: NFPA 701  
Country of Origin: China



Pulsar-Ink  
9690-20-SHR



Pulsar-Seaglass  
9690-10-SHR

## QUANTUM

Quantum is a wide-width sheer that features a large-scale angled Greek key design with opaque stitching producing a multi-dimensional look. This pattern is available in a bright white.

### Specs:

Content: 100% Polyester  
Width: 110" wide  
Repeat: 12" V x 12" H  
Flame Resistance: NFPA 701  
Country of Origin: China



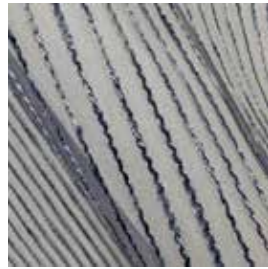
Quantum-Cloud  
9687-10-SHR

## QUASAR

Quasar is a wide-width, light sheer with multi-colored intertwined vertical stitching creating a traditional and balanced design. This pattern is available in a deep inky blue and a soft cool grey.

### Specs:

Content: 100% Polyester  
Width: 118" wide  
Repeat: 4.13" V x 14.96" H  
Flame Resistance: NFPA 701  
Country of Origin: China



Quasar-Ink  
9693-10-SHR



Quasar-Pewter  
9693-20-SHR

## ZENITH

Zenith is a traditional and formal yet delicate wide-width sheer. It has varied stitching and is almost translucent. This pattern is available in a creamy chamois and a bright icy white.

### Specs:

Content: 100% Polyester  
Width: 118" wide  
Repeat: 8.5" V x 0" H  
Flame Resistance: NFPA 701, ULC/S109  
Country of Origin: Turkey



Zenith-Chamois  
9697-10-SHR



Zenith-Snow  
9697-20-SHR

## Blackouts

These fabrics are integrated 3-pass blackouts, manufactured to block 100% of light. They also provide temperature control and sound absorption. With a selection of usable colors and styles, you can use these commercial quality blackout fabrics to nicely tie a room together.

### DORMIR

A subtle heathered effect adorns Dormir, an integrated 3-pass blackout heavyweight drapery fabric that passes NFPA 701 flame testing. Perfect for any commercial applications.

Specs:

Content: 100% Polyester

Width: 54" wide

Repeat: No Repeat

Flame Resistance: NFPA 701

Country of Origin: Mexico

300-yard minimum. Contact LebaTex for model room quantities\*



Dormir-Linen\*  
9599-10-BKO

## REPOSE

With a rich textured effect, Repose is an integrated 3-pass blackout heavyweight drapery fabric that passes NFPA 701 flame testing.

### Specs:

Content: 100% Polyester

Width: 54" wide

Repeat: No Repeat

Flame Resistance: NFPA 701

Country of Origin: Mexico

300-yard minimum. Contact LebaTex for model room quantities\*



Repose-Charcoal\*  
9597-50-BKO



Repose-Cobalt\*  
9597-60-BKO



Repose-Flax\*  
9597-30-BKO



Repose-Hemp\*  
9597-40-BKO



Repose-Incense\*  
9597-20-BKO



Repose-Slate\*  
9597-10-BKO

## SANDMAN

A simple interlacing woven fabric, Sandman is an integrated 3-pass blackout heavyweight drapery fabric that passes NFPA 701 flame testing.

### Specs:

Content: 100% Polyester

Width: 54" wide

Repeat: No Repeat

Flame Resistance: NFPA 701

Country of Origin: Mexico

300-yard minimum. Contact LebaTex for model room quantities\*



Sandman-Bone\*  
9598-20-BKO



Sandman-Brindle\*  
9598-30-BKO



Sandman-Chocolate\*  
9598-50-BKO



Sandman-Flint\*  
9598-40-BKO



Sandman-Graphite\*  
9598-60-BKO



Sandman-Iron\*  
9598-10-BKO



Sandman-Stone\*  
9598-70-BKO

# SKETCH

An expressive textured drapery cloth with a playful all over print, Sketch's use of marker-like strokes creates a bold statement that will enhance any space.

## Specs:

Base Cloth: Delphi  
Content: 100% Polyester  
Width: 55" wide  
Repeat: 11" V x 8" H  
Flame Resistance: NFPA 701  
Country of Origin: New Zealand



Sketch-Emerald Green  
1776-40-DEL



Sketch-Paynes Gray  
1776-30-DEL



Sketch-Stucco  
1776-50-DEL



Sketch-Taupe  
1776-20-DEL