



LEBATEX<sup>®</sup>

A STACY GARCIA COMPANY



**belladura**<sup>™</sup>





## ABOUT THE COLLECTION

The Bella Dura™ collection is a beautiful grouping of upholstery fabrics that are a great choice for areas with high traffic or direct sunlight, meeting a minimum of **1500 hours of lightfastness**. This collection is created with **Cradle to Cradle** principles, ensuring that every step of the production process is mindful of environmental impact and responsible sourcing. This collection boasts a stunning array of **23 patterns** in **162 SKUs** that are sure to inspire your creative vision.

## KEY FEATURES

Inherently Stain Resistant | Bleach Cleanable | UV Resistant | Mildew Resistant  
One-Yard Minimum | Minimum of 1500 Hours Lightfastness | Made in the USA

## FEATURES & BENEFITS

---

### CRADLE TO CRADLE SUSTAINABILITY

Sustainability is at the heart of our mission. We're proud to say that this collection has been created with Cradle to Cradle principles, ensuring that every step of the production process is mindful of environmental impact and responsible sourcing.

### 1500 HOURS OF LIGHTFASTNESS

Designed to stand the test of time. With an impressive 1500 hours of lightfastness, you can be confident that these textiles will retain their vibrant colors and exquisite patterns even under the sunniest skies.

### IN-STOCK 1 YARD MOQ

With a minimum order quantity of just 1 yard, you can now explore this collection without constraints, making it easier than ever to bring your design visions to life.



**Indoor-Outdoor**



**High-Durability**



**Sustainable**



**Fade-Resistant**



**Pill-Resistant**



**Water & Stain-Resistant**



**Easy-to-Clean**



**Made in the USA**

### WARRANTY

Bella Dura fabrics are covered with a 3-year commercial warranty for stain resistance and colorfastness to water, light and crocking (transfer of color to other fabrics) and mildew.

## SUSTAINABILITY

---

Bella Dura is proudly woven in the USA and utilizes the only fiber on the market, synthetic or natural, that begins as a by-product and ends its life as a 100% fully recyclable product.

The yarns used are solution dyed. No additional chemicals or dyes are used which means substantially less energy and water is used and no environmental pollution.

Bella Dura's recycle stream is a closed loop meaning the fabric and scrap can be safely and easily recycled. This process begins by sending samples of the fabric and a completed description/approval form for the waste available. Once approved, fabric is returned and enters the recycling stream.

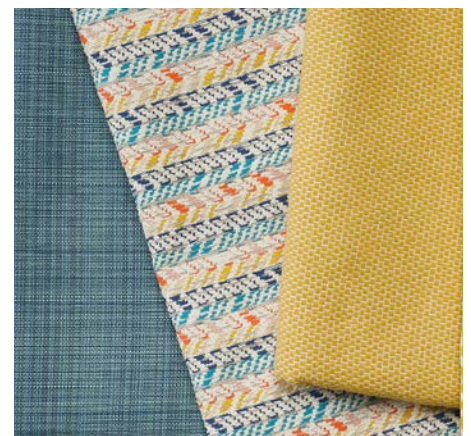
[CLICK HERE FOR RECYCLING FORM](#)



## SOLUTION DYED FABRICS

---

Solution dyeing means that color is added to the fibers while they are in a liquid state during the yarn manufacturing process. The color is integrated into the very fiber, which is why the fabric can be cleaned with bleach and still retain the color. Think of the analogy of a carrot and a radish; the color in the carrot is throughout, while the color on the radish lies on the outer surface. The carrot would represent a solution dyed fiber.



# PRODUCT INFORMATION

---

## BARRINGTON

Barrington is a subtly textured woven upholstery that is suitable for both indoors and outdoors. This pattern features a soft woven gridwork design on a soft, heathered background. This pattern is available in 8 colorways.

Specs:

Content: 100% Bella Dura™ Solution Dyed Polyolefin

Finish: Inherently Stain Resistant

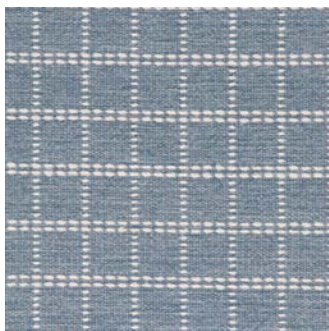
Width: 53" wide

Repeat: 1.125" V x 1" H

Abrasion: Wyzenbeek – 70,000 Double Rubs

Flame Resistance: NFPA 260, Cal 117-2013

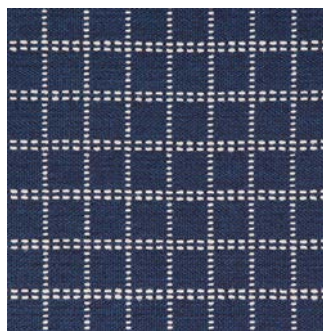
Country of Origin: USA



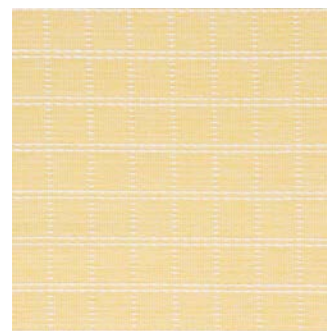
Barrington-Cerulean  
9723-30-SDW



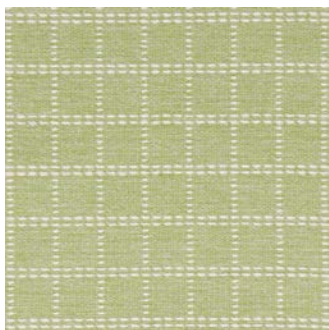
Barrington-Fog  
9723-40-SDW



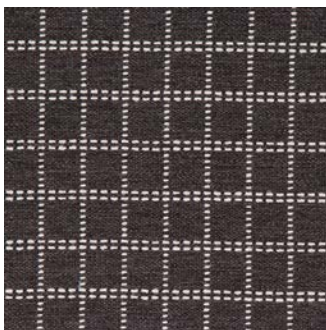
Barrington-Indigo  
9723-50-SDW



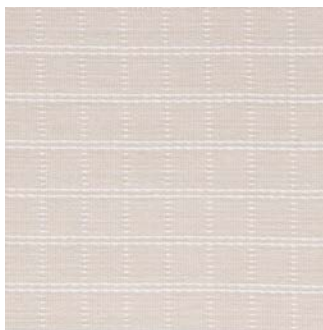
Barrington-Lemon  
9723-10-SDW



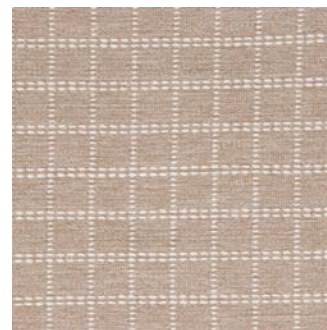
Barrington-Lime  
9723-20-SDW



Barrington-Onyx  
9723-80-SDW



Barrington-Pearl  
9723-60-SDW



Barrington-Pebble  
9723-70-SDW

# PRODUCT INFORMATION

---

## BIDDEFORD

Biddeford is a smooth textured woven upholstery with a bold pattern that is suitable for both indoors and outdoors. This pattern features a block print inspired geometric pattern on a soft, weathered background creating a beautiful organic look. This pattern is available in 8 colorways.

### Specs:

Content: 100% Bella Dura™ Solution Dyed Polyolefin  
Finish: Inherently Stain Resistant  
Width: 55" wide  
Repeat: 6" V x 6.875" H  
Abrasion: Wyzenbeek – 100,000 Double Rubs  
Flame Resistance: NFPA 260, Cal 117-2013  
Country of Origin: USA



Biddeford-Cerulean  
9722-30-SDW



Biddeford-Coral  
9722-10-SDW



Biddeford-Dove  
9722-50-SDW



Biddeford-Ink  
9722-40-SDW



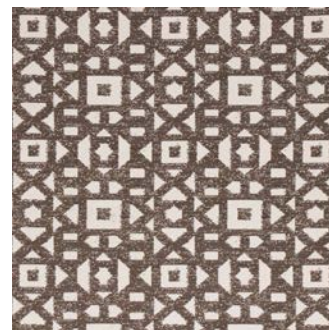
Biddeford-Lime  
9722-20-SDW



Biddeford-Onyx  
9723-80-SDW



Biddeford-Pebble  
9723-60-SDW



Biddeford-Walnut  
9723-70-SDW

# PRODUCT INFORMATION

---

## CARAVAN

Caravan is a soft, subtly textured woven upholstery that is suitable for both indoors and outdoors. This pattern features a chunky weave in a solid color, making this a staple that fits into any environment. This pattern is available in 10 colorways.

Specs:

Content: 100% Bella Dura™ Solution Dyed Polyolefin  
Finish: Inherently Stain Resistant  
Width: 54" wide  
Repeat: 0.125" V x 0.375" H  
Abrasion: Wyzenbeek – 100,000 Double Rubs  
Flame Resistance: NFPA 260, Cal 117-2013  
Country of Origin: USA



Caravan-Alabaster  
9478-10-SDW



Caravan-Ecru  
9478-20-SDW



Caravan-Ink  
9478-70-SDW



Caravan-Ivory  
9478-30-SDW



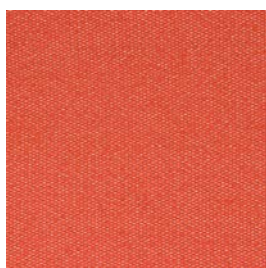
Caravan-Mist  
9478-50-SDW



Caravan-Onyx  
9478-100-SDW



Caravan-Pebble  
9478-80-SDW



Caravan-Persimmon  
9478-40-SDW



Caravan-Shale  
9478-60-SDW



Caravan-Walnut  
9478-90-SDW



# PRODUCT INFORMATION

---

## CLEARWATER

Clearwater is a textured woven upholstery that is suitable for both indoors and outdoors. This pattern features a small pebbled design over neutral colors, creating a subtle yet beautiful contrast. This pattern is available in 7 colorways.

Specs:

Content: 100% Bella Dura™ Solution Dyed Polyolefin

Finish: Inherently Stain Resistant

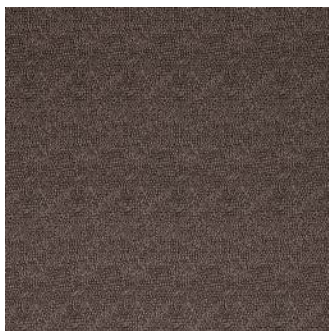
Width: 54" wide

Repeat: No Repeat

Abrasion: Wyzenbeek – 80,000 Double Rubs

Flame Resistance: NFPA 260, Cal 117-2013

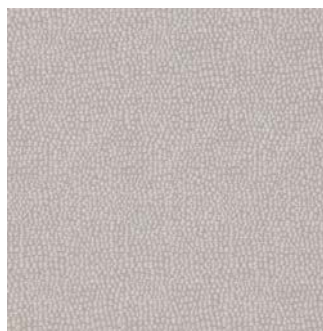
Country of Origin: USA



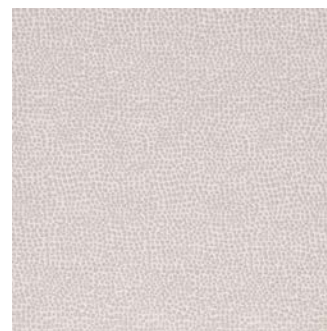
Clearwater-Brindle  
9096-110-SDW



Clearwater-Charcoal  
9096-70-SDW



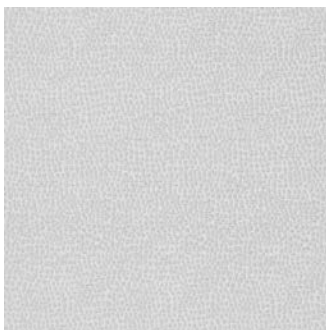
Clearwater-Cloud  
9096-10-SDW



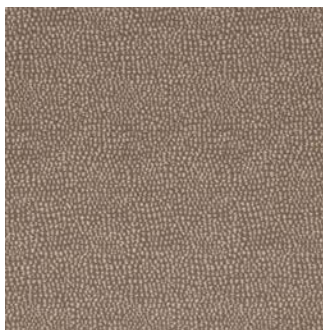
Clearwater-Dove  
9096-90-SDW



Clearwater-Ink  
9096-80-SDW



Clearwater-Shale  
9096-60-SDW



Clearwater-Walnut  
9096-100-SDW

# PRODUCT INFORMATION

---

## CORAL BEACH

Coral Beach is a unique woven upholstery that is suitable for both indoors and outdoors. This pattern features an array of beautiful coral blooms on an off-white background, creating an elegant yet bold graphic design. This pattern is available in 6 colorways.

### Specs:

Content: 100% Bella Dura™ Solution Dyed Polyolefin  
Finish: Inherently Stain Resistant  
Width: 54" wide  
Repeat: 20" V x 13.5" H  
Abrasion: Wyzenbeek – 100,000 Double Rubs  
Flame Resistance: NFPA 260, Cal 117-2013  
Country of Origin: USA



Coral Beach-Cerulean  
9124-90-SDW



Coral Beach-Denim  
9124-100-SDW



Coral Beach-Meadow  
9124-80-SDW



Coral Beach-Onyx  
9124-120-SDW



Coral Beach-Pebble  
9124-110-SDW



Coral Beach-Persimmon  
9124-70-SDW

# PRODUCT INFORMATION

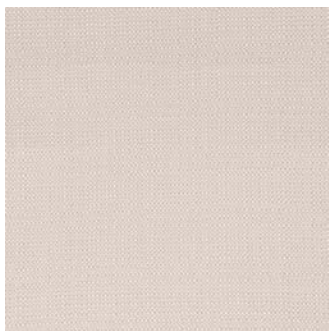
---

## DUXBURY

Duxbury is a softly textured woven upholstery that is suitable for both indoors and outdoors. This pattern features an irregular basket weave in a solid color that creates an organic, sturdy look. This pattern is available in 5 colorways.

Specs:

Content: 100% Bella Dura™ Solution Dyed Polyolefin  
Finish: Inherently Stain Resistant  
Width: 54" wide  
Repeat: No Repeat  
Abrasion: Wyzenbeek – 50,000 Double Rubs  
Flame Resistance: NFPA 260, Cal 117-2013  
Country of Origin: USA



Duxbury-Flax  
9141-90-SDW



Duxbury-Indigo  
9141-80-SDW



Duxbury-Ivory  
9141-20-SDW



Duxbury-Shale  
9141-70-SDW



Duxbury-White  
9141-60-SDW

# PRODUCT INFORMATION

---

## HARPSWELL

Harpwell is a softly textured woven upholstery that is suitable for both indoors and outdoors. This pattern features an array of tall ellipses on a heathered background that creates a beautiful and exciting look. This pattern is available in 9 colorways.

Specs:

Content: 100% Bella Dura™ Solution Dyed Polyolefin  
Finish: Inherently Stain Resistant  
Width: 55" wide  
Repeat: 7.5" V x 3.5" H  
Abrasion: Wyzenbeek – 80,000 Double Rubs  
Flame Resistance: NFPA 260, Cal 117-2013  
Country of Origin: USA



Harpwell-Chambray  
9721-40-SDW



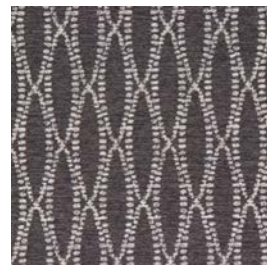
Harpwell-Coral  
9721-10-SDW



Harpwell-Ink  
9721-80-SDW



Harpwell-Lime  
9721-30-SDW



Harpwell-Onyx  
9721-70-SDW



Harpwell-Pewter  
9721-60-SDW



Harpwell-Shale  
9721-50-SDW



Harpwell-Turquoise  
9721-20-SDW



Harpwell-Umber  
9721-90-SDW

# PRODUCT INFORMATION

---

## HAVERHILL

Haverhill is a soft, textured woven upholstery that is suitable for both indoors and outdoors. This pattern features a textured chenille weave on a silvery background, creating a radiant, shimmery look. This pattern is available in 4 colorways.

Specs:

Content: 100% Bella Dura™ Solution Dyed Polyolefin  
Finish: Inherently Stain Resistant  
Width: 54" wide  
Repeat: 13.5" V x 13.625" H  
Abrasion: Wyzenbeek – 70,000 Double Rubs  
Flame Resistance: NFPA 260, Cal 117-2013  
Country of Origin: USA



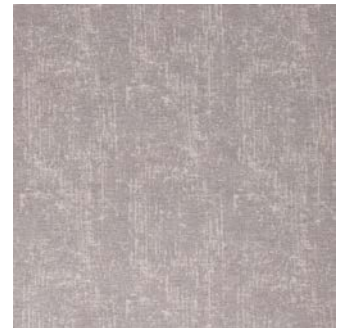
Haverhill-Chambray  
9720-10-SDW



Haverhill-Ink  
9720-30-SDW



Haverhill-Onyx  
9720-40-SDW



Haverhill-Shale  
9720-20-SDW

# PRODUCT INFORMATION

---

## IBIZA

Ibiza is a soft, textured woven upholstery that is suitable for both indoors and outdoors. This pattern features an array of concentric woven diamonds that create a sturdy yet visually appealing look. This pattern is available in 8 colorways.

### Specs:

Content: 100% Bella Dura™ Solution Dyed Polyolefin

Finish: Inherently Stain Resistant

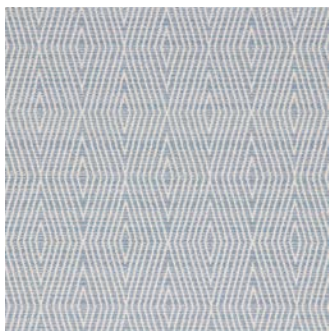
Width: 55" wide

Repeat: 6" V x 6.875" H

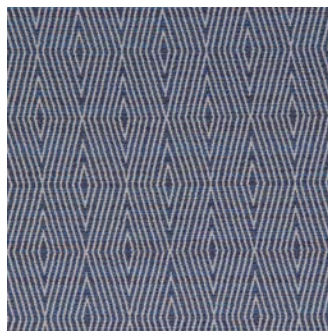
Abrasion: Wyzenbeek – 100,000 Double Rubs

Flame Resistance: NFPA 260, Cal 117-2013

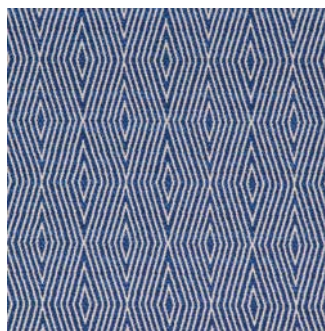
Country of Origin: USA



Ibiza-Chambray  
9027-150-SDW



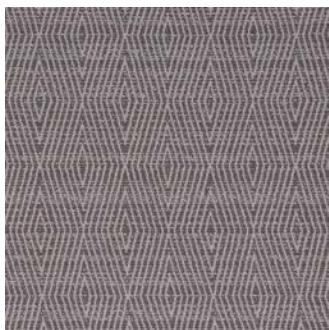
Ibiza-Ink  
9027-190-SDW



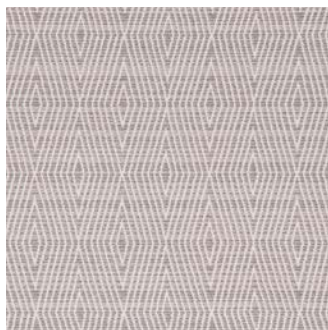
Ibiza-Atlantic  
9027-180-SDW



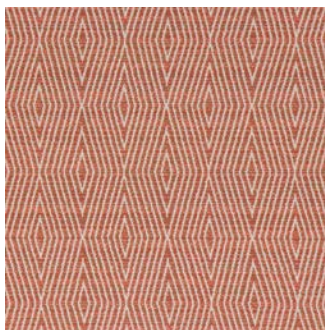
Ibiza-Pebble  
9027-200-SDW



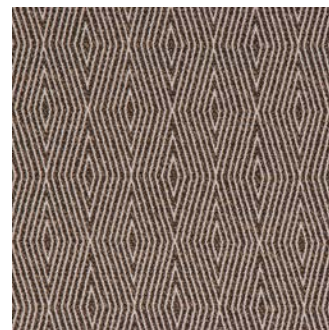
Ibiza-Pewter  
9027-170-SDW



Ibiza-Shale  
9027-160-SDW



Ibiza-Terracotta  
9027-140-SDW



Ibiza-Umber  
9027-210-SDW

# PRODUCT INFORMATION

---

## IPSWICH

Ipswich is a sturdy woven upholstery that is suitable for both indoors and outdoors. This pattern features irregular stripes of varying color to create a dynamic look. This pattern is available in 6 colorways.

### Specs:

Content: 100% Bella Dura™ Solution Dyed Polyolefin  
Finish: Inherently Stain Resistant  
Width: 56" wide  
Repeat: 14.25" V x 7" H  
Abrasion: Wyzenbeek – 100,000 Double Rubs  
Flame Resistance: NFPA 260, Cal 117-2013  
Country of Origin: USA



Ipswich-Cerulean  
9724-40-SDW



Ipswich-Coral  
9724-10-SDW



Ipswich-Cyan  
9724-30-SDW



Ipswich-Dove  
9724-50-SDW



Ipswich-Fiesta  
9724-20-SDW



Ipswich-Ink  
9724-60-SDW

# PRODUCT INFORMATION

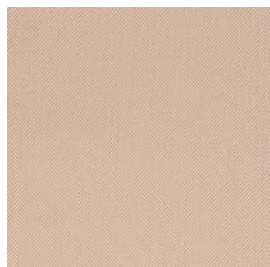
---

## MALDEN

Malden is a soft woven upholstery that is suitable for both indoors and outdoors. This pattern features a tight weave that melds together to create a beautiful, soft color. This pattern is available in 10 colorways.

Specs:

Content: 100% Bella Dura™ Solution Dyed Polyolefin  
Finish: Inherently Stain Resistant  
Width: 54" wide  
Repeat: No Repeat  
Abrasion: Wyzenbeek – 100,000 Double Rubs  
Flame Resistance: NFPA 260, Cal 117-2013  
Country of Origin: USA



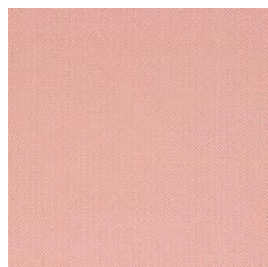
Malden-Camel  
9136-120-SDW



Malden-Canvas  
9136-170-SDW



Malden-Charcoal  
9136-180-SDW



Malden-Coral  
9136-110-SDW



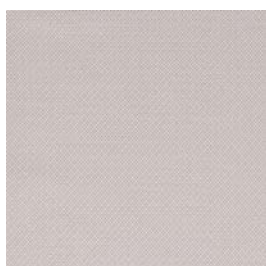
Malden-Driftwood  
9136-10-SDW



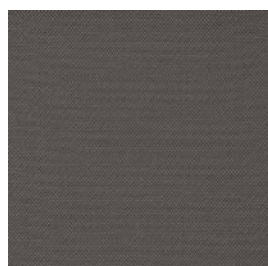
Malden-Golden  
9136-130-SDW



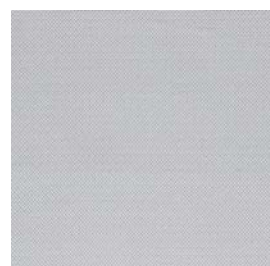
Malden-Ink  
9136-160-SDW



Malden-Pebble  
9136-150-SDW



Malden-Pewter  
9136-40-SDW



Malden-Sky  
9136-140-SDW



# PRODUCT INFORMATION

---

## MARBLEHEAD

Marblehead is a soft, textured woven upholstery that is suitable for both indoors and outdoors. This pattern features a textured stria of varied colors that create a dynamic yet soft look. This pattern is available in 6 colorways.

### Specs:

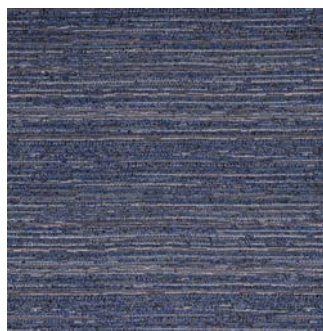
Content: 100% Bella Dura™ Solution Dyed Polyolefin  
Finish: Inherently Stain Resistant  
Width: 54" wide  
Repeat: 8" V x 13.5" H  
Abrasion: Wyzenbeek – 100,000 Double Rubs  
Flame Resistance: NFPA 260, Cal 117-2013  
Country of Origin: USA



Marblehead-Brindle  
9725-60-SDW



Marblehead-Cerulean  
9725-10-SDW



Marblehead-Ink  
9725-30-SDW



Marblehead-Pebble  
9725-50-SDW



Marblehead-Silvermine  
9725-20-SDW



Marblehead-Walnut  
9725-40-SDW

# PRODUCT INFORMATION

---

## MERRIMAC

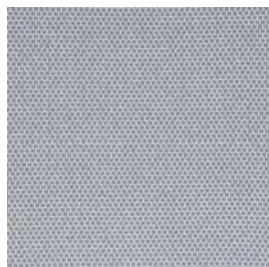
Merrimac is a soft, textured woven upholstery that is suitable for both indoors and outdoors. This pattern features a simple basket weave that creates a structured, yet organic look. This pattern is available in 10 colorways.

Specs:

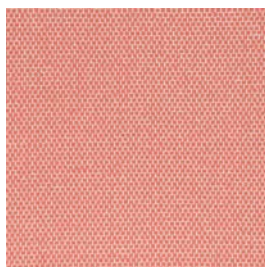
Content: 100% Bella Dura™ Solution Dyed Polyolefin  
Finish: Inherently Stain Resistant  
Width: 53" wide  
Repeat: No Repeat  
Abrasion: Wyzenbeek – 100,000 Double Rubs  
Flame Resistance: NFPA 260, Cal 117-2013  
Country of Origin: USA



Merrimac-Celadon  
9719-40-SDW



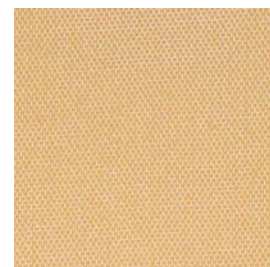
Merrimac-Chambray  
9719-50-SDW



Merrimac-Coral  
9719-10-SDW



Merrimac-Flax  
9719-70-SDW



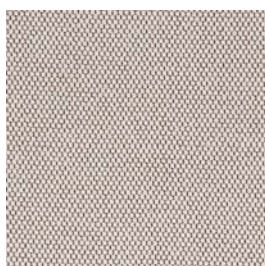
Merrimac-Goldenrod  
9719-20-SDW



Merrimac-Meadow  
9719-30-SDW



Merrimac-Pebble  
9719-80-SDW



Merrimac-Pepper  
9719-100-SDW



Merrimac-Shale  
9719-60-SDW



Merrimac-Walnut  
9719-90-SDW

# PRODUCT INFORMATION

---

## MONACO

Monaco is a soft, yet sturdy woven upholstery that is suitable for both indoors and outdoors. This pattern features interlacing lines that create a beautiful geometric design with a pleasing textural contrast. This pattern is available in 3 colorways.

### Specs:

Content: 100% Bella Dura™ Solution Dyed Polyolefin  
Finish: Inherently Stain Resistant  
Width: 54" wide  
Repeat: 6.75" V x 6.875" H  
Abrasion: Wyzenbeek – 100,000 Double Rubs  
Flame Resistance: NFPA 260, Cal 117-2013  
Country of Origin: USA



Monaco-Marine  
9095-60-SDW



Monaco-Natural  
9095-10-SDW



Monaco-Smoke  
9095-30-SDW

# PRODUCT INFORMATION

---

## MONTAUK STRIPE

Montauk Stripe is a soft, yet sturdy woven upholstery that is suitable for both indoors and outdoors. This pattern features organic vertical stripes of varying color to create a beautiful asymmetric design. This pattern is available in 6 colorways.

### Specs:

Content: 100% Bella Dura™ Solution Dyed Polyolefin  
Finish: Inherently Stain Resistant  
Width: 54" wide  
Repeat: 10.5" V x 13.625" H  
Railroaded: YES  
Abrasion: Wyzenbeek – 60,000 Double Rubs  
Flame Resistance: NFPA 260, Cal 117-2013  
Country of Origin: USA



Montauk Stripe-Atlantic  
9094-120-SDW



Montauk Stripe-Caribbean  
9094-110-SDW



Montauk Stripe-Cerulean  
9094-100-SDW



Montauk Stripe-Coral  
9094-90-SDW



Montauk Stripe-Neutral  
9094-10-SDW



Montauk Stripe-Teak  
9094-60-SDW

# PRODUCT INFORMATION

---

## NAVAJO

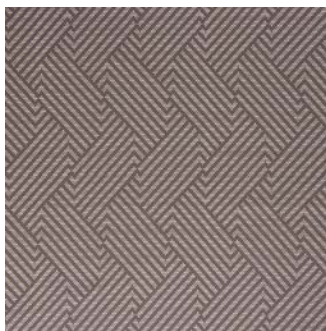
Navajo is a textured woven upholstery that is suitable for both indoors and outdoors. This pattern features a mix of chunky and tight weaving to create a dynamic parquet design. This pattern is available in 6 colorways.

### Specs:

Content: 100% Bella Dura™ Solution Dyed Polyolefin  
Finish: Inherently Stain Resistant  
Width: 54" wide  
Repeat: 12.5" V x 5.5" H  
Abrasion: Wyzenbeek – 50,000 Double Rubs  
Flame Resistance: NFPA 260, Cal 117-2013  
Country of Origin: USA



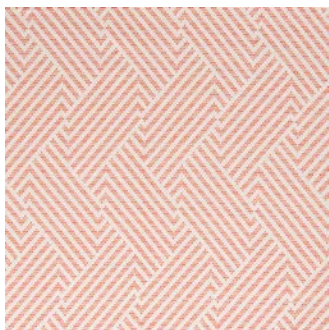
Navajo-Celadon  
9490-70-SDW



Navajo-Charcoal  
9490-80-SDW



Navajo-Pebble  
9490-50-SDW



Navajo-Persimmon  
9490-60-SDW



Navajo-Turquoise  
9490-30-SDW



Navajo-Walnut  
9490-90-SDW

# PRODUCT INFORMATION

---

## NEWPORT

Newport is a sturdy woven upholstery that is suitable for both indoors and outdoors. This pattern features an irregular herringbone design that creates a dynamic, yet structured look. This pattern is available in 4 colorways.

### Specs:

Content: 100% Bella Dura™ Solution Dyed Polyolefin  
Finish: Inherently Stain Resistant  
Width: 54" wide  
Repeat: 1.5" V x 3.75" H  
Abrasion: Wyzenbeek – 100,000 Double Rubs  
Flame Resistance: NFPA 260, Cal 117-2013  
Country of Origin: USA



Newport-Camel  
9098-120-SDW



Newport-Cerulean  
9098-90-SDW



Newport-Indigo  
9098-110-SDW



Newport-Shale  
9098-100-SDW

# PRODUCT INFORMATION

---

## RIVERTON STRIPE

Riverton Stripe is a soft woven upholstery that is suitable for both indoors and outdoors. This pattern features an irregular stripe with varied widths to create a dynamic look that is pleasing to the eye. This pattern is available in 6 colorways.

### Specs:

Content: 100% Bella Dura™ Solution Dyed Polyolefin  
Finish: Inherently Stain Resistant  
Width: 54" wide  
Repeat: 0" V x 7.75" H  
Railroaded: YES  
Abrasion: Wyzenbeek – 100,000 Double Rubs  
Flame Resistance: NFPA 260, Cal 117-2013  
Country of Origin: USA



Riverton Stripe-Atlantic  
9133-10-SDW



Riverton Stripe-Brindle  
9133-100-SDW



Riverton Stripe-Cerulean  
9133-80-SDW



Riverton Stripe-Multi  
9133-70-SDW



Riverton Stripe-Persimmon  
9133-60-SDW



Riverton Stripe-Shoreline  
9133-90-SDW

# PRODUCT INFORMATION

---

## SANIBEL

Sanibel is a textured woven upholstery that is suitable for both indoors and outdoors. This pattern features a solid-color weave with a lightly three-dimensional texture to create an attention-grabbing contrast. This pattern is available in 7 colorways.

### Specs:

Content: 100% Bella Dura™ Solution Dyed Polyolefin

Finish: Inherently Stain Resistant

Width: 54" wide

Repeat: No Repeat

Abrasion: Wyzenbeek – 100,000 Double Rubs

Flame Resistance: NFPA 260, Cal 117-2013

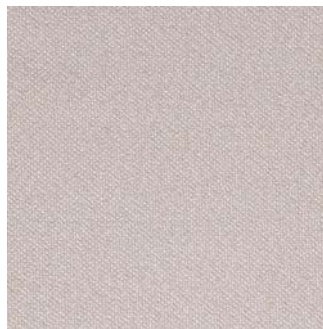
Country of Origin: USA



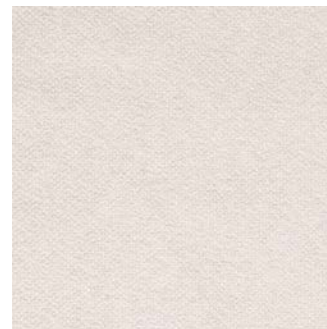
Sanibel-Brindle  
9119-110-SDW



Sanibel-Cliff  
9119-90-SDW



Sanibel-Dove  
9119-50-SDW



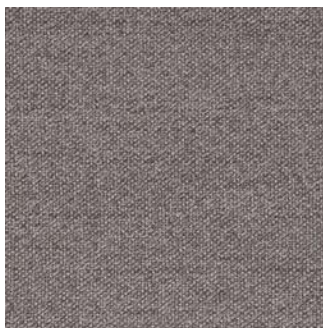
Sanibel-Ecru  
9119-80-SDW



Sanibel-Indigo  
9119-70-SDW



Sanibel-Pebble  
9119-100-SDW



Sanibel-Shale  
9119-60-SDW



# PRODUCT INFORMATION

---

## SANTA FE

Santa Fe is a woven upholstery that is suitable for both indoors and outdoors. This pattern features Southwest herringbone in a sweeping stripe that creates a dynamic look. This pattern is available in 8 colorways.

### Specs:

Content: 100% Bella Dura™ Solution Dyed Polyolefin

Finish: Inherently Stain Resistant

Width: 54" wide

Repeat: 6.5" V x 13.375" H

Abrasion: Wyzenbeek – 100,000 Double Rubs

Flame Resistance: NFPA 260, Cal 117-2013

Country of Origin: USA



Santa Fe-Cyan  
9484-90-SDW



Santa Fe-Fiesta  
9484-80-SDW



Santa Fe-Ink  
9484-100-SDW



Santa Fe-Peacock  
9484-50-SDW



Santa Fe-Pebble  
9484-110-SDW



Santa Fe-Persimmon  
9484-70-SDW



Santa Fe-Shale  
9484-10-SDW



Santa Fe-Umber  
9484-120-SDW

# PRODUCT INFORMATION

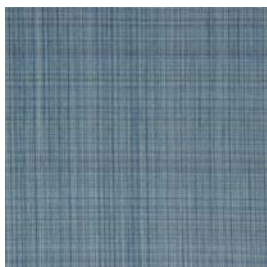
---

## SOLSTICE

Solstice is a sturdy upholstery that is suitable for both indoors and outdoors. This pattern features a beautiful weave of different colors to create a cross-hatched blend. This pattern is available in 10 colorways.

Specs:

Content: 100% Bella Dura™ Solution Dyed Polyolefin  
Finish: Inherently Stain Resistant  
Width: 54" wide  
Repeat: No Repeat  
Abrasion: Wyzenbeek – 100,000 Double Rubs  
Flame Resistance: NFPA 260, Cal 117-2013  
Country of Origin: USA



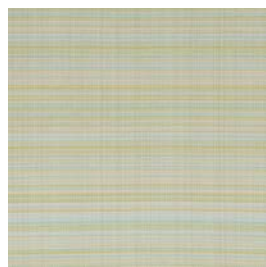
Solstice-Bayou  
9031-160-SDW



Solstice-Chambray  
9031-180-SDW



Solstice-Cliff  
9031-200-SDW



Solstice-Cyan  
9031-150-SDW



Solstice-Ink  
9031-190-SDW



Solstice-Moon  
9031-40-SDW



Solstice-Pacific  
9031-130-SDW



Solstice-Persimmon  
9031-140-SDW



Solstice-Shale  
9031-170-SDW



Solstice-Umber  
9031-210-SDW

# PRODUCT INFORMATION

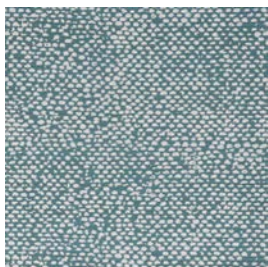
---

## STONEHAVEN

Stonehaven is a sturdy upholstery that is suitable for both indoors and outdoors. This pattern features a scattered pebble texture that creates an organic and irregular design. This pattern is available in 9 colorways.

Specs:

Content: 100% Bella Dura™ Solution Dyed Polyolefin  
Finish: Inherently Stain Resistant  
Width: 54" wide  
Repeat: 12" V x 13.875" H  
Abrasion: Wyzenbeek – 100,000 Double Rubs  
Flame Resistance: NFPA 260, Cal 117-2013  
Country of Origin: USA



Stonehaven-Bayou  
9132-120-SDW



Stonehaven-Camel  
9132-160-SDW



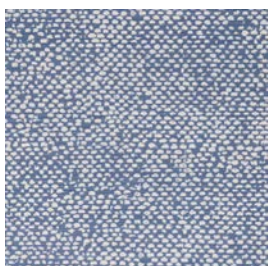
Stonehaven-Flax  
9132-150-SDW



Stonehaven-Goldenrod  
9132-100-SDW



Stonehaven-Lime  
9132-110-SDW



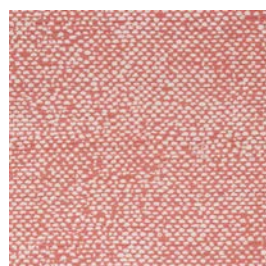
Stonehaven-Marine  
9132-140-SDW



Stonehaven-Onyx  
9132-170-SDW



Stonehaven-Silver  
9132-130-SDW



Stonehaven-Terracotta  
9132-90-SDW

# PRODUCT INFORMATION

---

## WANDERER

Wanderer is a soft woven upholstery that is suitable for both indoors and outdoors. This pattern features a chunky weave and a big, bold stripe design to create a timeless look. This pattern is available in 6 colorways.

### Specs:

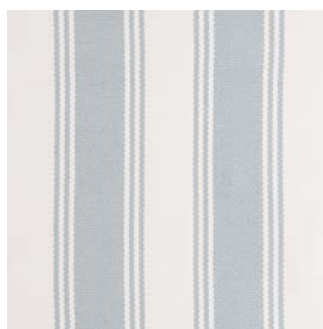
|                    |   |
|--------------------|---|
| Content:           | 100% Bella Dura™ Solution Dyed Polyolefin |
| Finish:            | Inherently Stain Resistant                |
| Width:             | 54" wide                                  |
| Repeat:            | 6.5" V x 0" H                             |
| Railroaded:        | YES                                       |
| Abrasion:          | Wyzenbeek – 100,000 Double Rubs           |
| Flame Resistance:  | NFPA 260, Cal 117-2013                    |
| Country of Origin: | USA                                       |



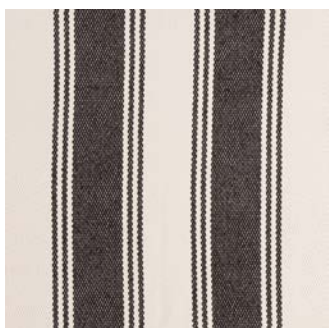
Wanderer-Atlantic  
9493-40-SDW



Wanderer-Ink  
9493-130-SDW



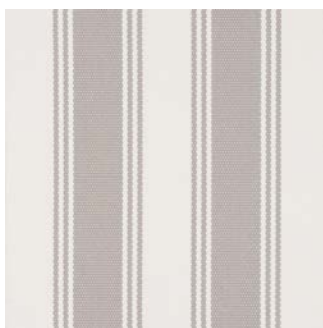
Wanderer-Mist  
9493-120-SDW



Wanderer-Onyx  
9493-140-SDW



Wanderer-Persimmon  
9493-110-SDW



Wanderer-Shale  
9493-80-SDW